

# Youngstown Public Art Opportunity Site Catalog

March 2025

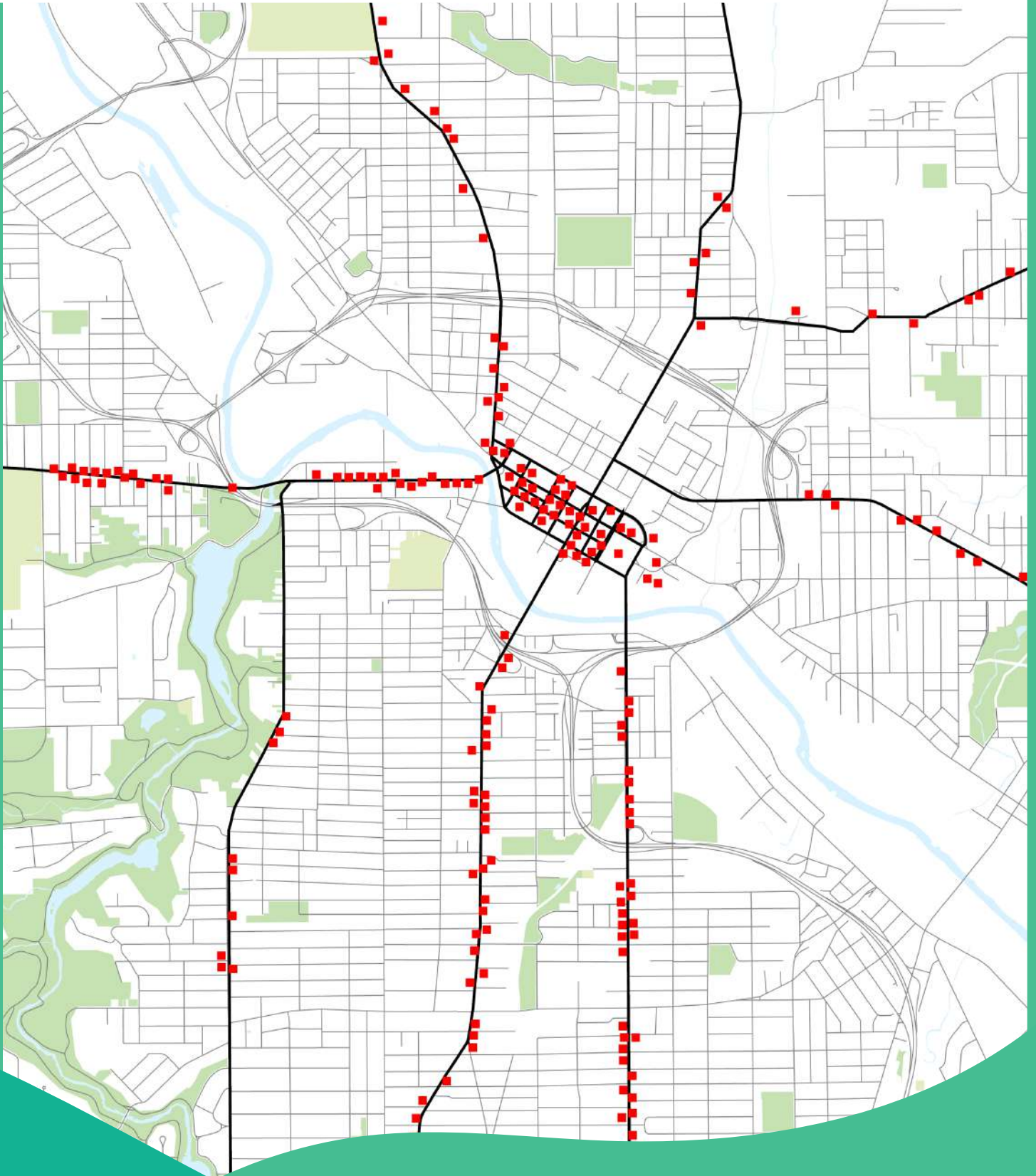


Produced By

economic  
**ACTION**  
group inc.

117 S. Champion Art by Overall Paint Company

# Opportunity Sites





# Introduction

EAG believes in the power of public art as a community development tool. Public art and creative placemaking are powerful devices that enhance a community's visual appearance and celebrate local identity.

Since the publication of our original Public Art Opportunity Site Catalog in 2016, numerous public art installations have been completed across the city.

While significant progress has been made, this updated catalog is designed to increase public awareness and accessibility to new opportunities. With a total of 222 sites, we view these blank canvases as unique opportunities to enhance the public realm and celebrate creativity.

For any questions or assistance in creating public art or connecting with an artist for your space, or to request the removal of your location from the catalog, please contact [\*\*info@eagworks.org\*\*](mailto:info@eagworks.org).

All work was conducted from the public right of way without impeding public property. Anyone interested in completing a project must obtain consent from the property owner beforehand.

# The Process

EAG conducted a formal survey of each corridor from the public right of way (street or sidewalk), gathering detailed data on building locations and physical conditions. To ensure ease of use, surveyors recorded the following:

A brief description of the corridor

The composition of the built environment

An overview of existing public art

Each opportunity site features:

- A site photograph
- Address
- Assessment of building conditions
- Owner's name from the Mahoning County GIS map (as of March 4th, 2025)
- Additional notes

Detailed information on each building is provided, including construction materials, surface conditions rated as poor, fair, or good for painting based on visual inspection, structure occupancy status (occupied, vacant, or underutilized), and the cardinal direction of traffic patterns facing the opportunity site. These details are presented alongside the previously mentioned information.



# The Team

**Nick Chretien - Executive Director**

**Daniel Bancroft - Operations Manager**

**Marquett Samuels - Program Manager**

**Sarah Streb - Marketing & Outreach Intern**

**Danielle Griffith - GIS Analyst**

**Rose McClurkin - Community Engagement Intern**

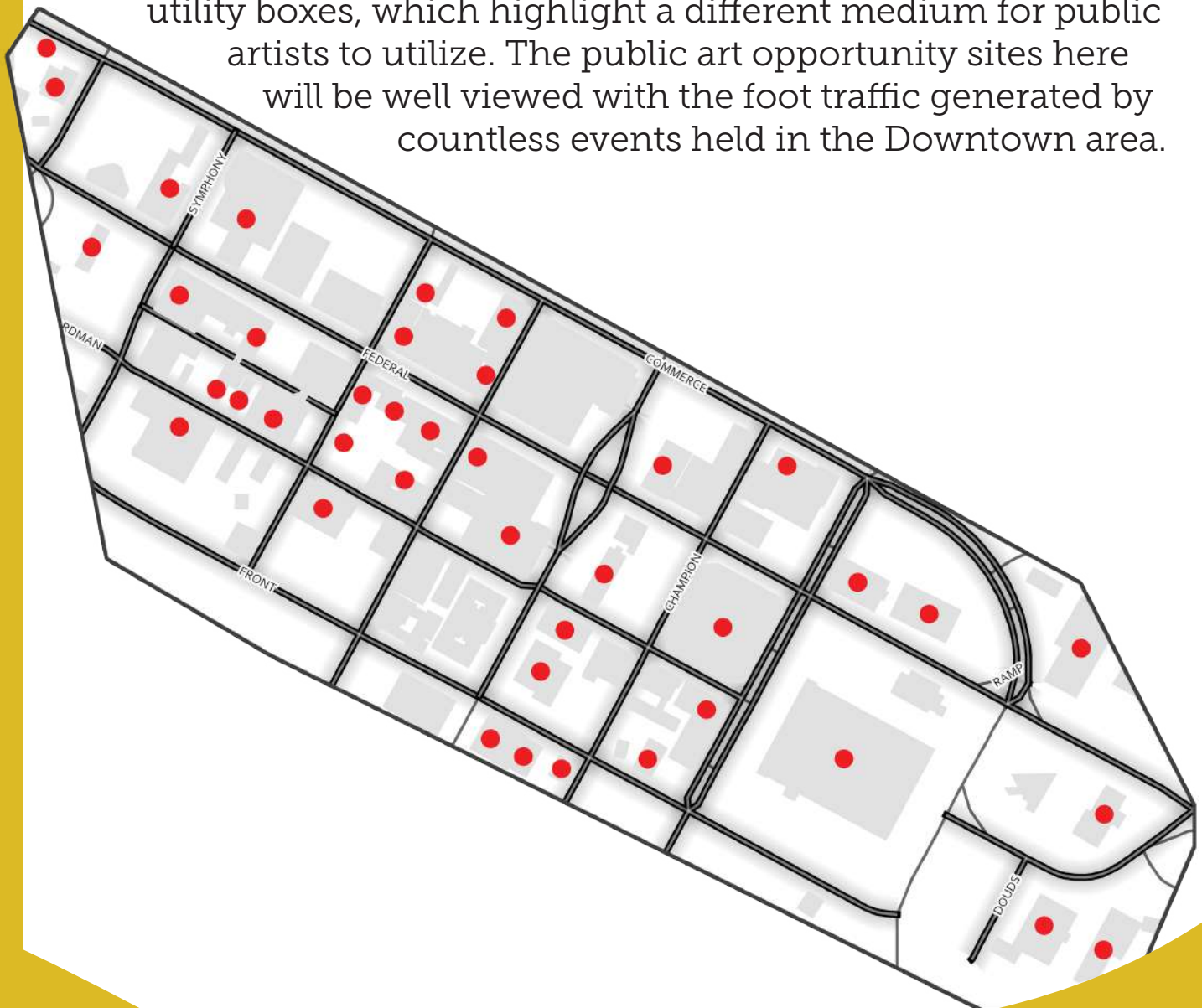
**Colleen Davis - Community Development Intern**



*July 2012 Mural by Curtis Goldstein, 2622 Glenwood Ave*

# Downtown

Downtown Youngstown is the heart of the city. With a mix of commercial, office, and residential buildings, Downtown is a holds many opportunity sites for public art. One notable existing public art piece is a mural that spans all sides of the Apollo Building and can be seen by anyone coming into the city via the South Avenue Bridge. Downtown is also home to art-covered utility boxes, which highlight a different medium for public artists to utilize. The public art opportunity sites here will be well viewed with the foot traffic generated by countless events held in the Downtown area.



# Downtown





# Downtown

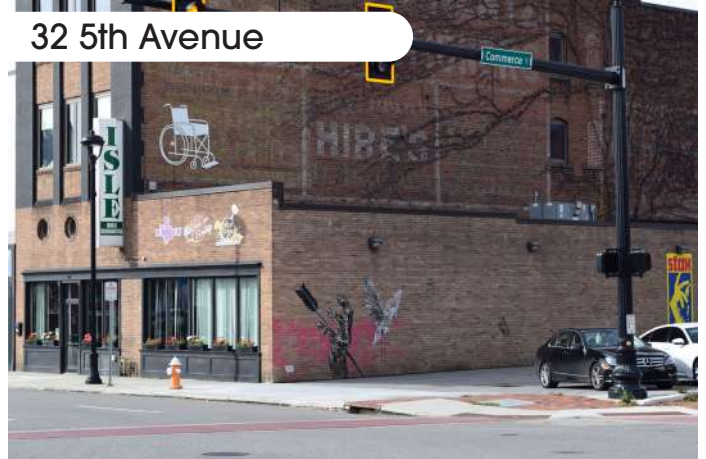


# Existing Downtown Art

Market & Federal



32 5th Avenue



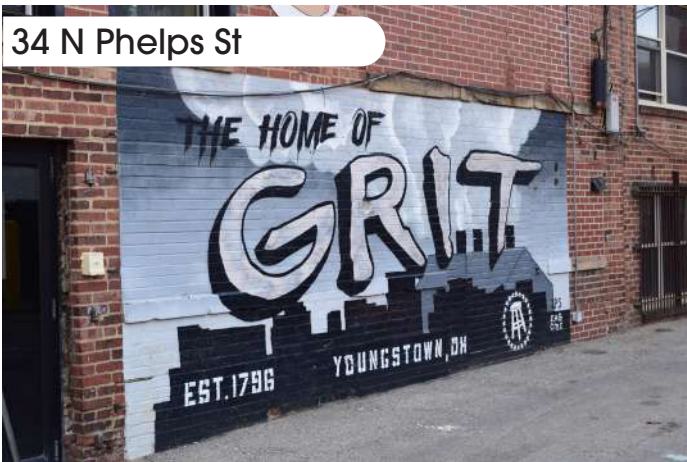
34 W Federal



5th Avenue & Federal



34 N Phelps St



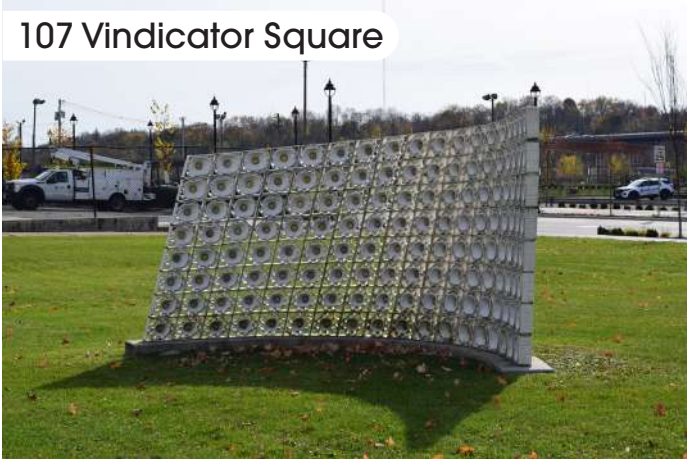
Boardman St & Hazel





# Existing Downtown Art

107 Vindicator Square



117 S Champion St



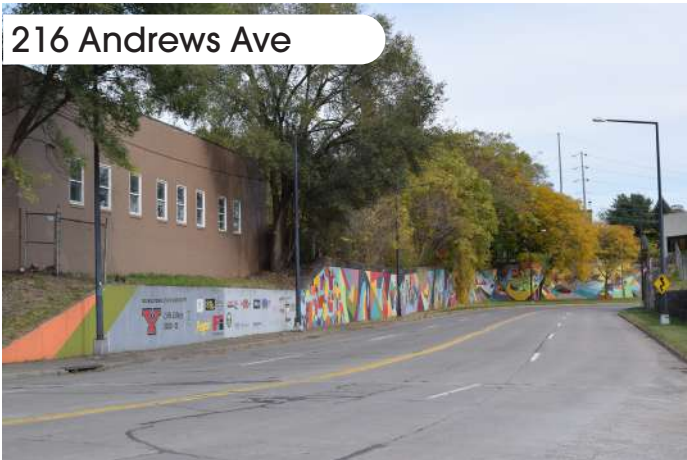
117 S Champion St



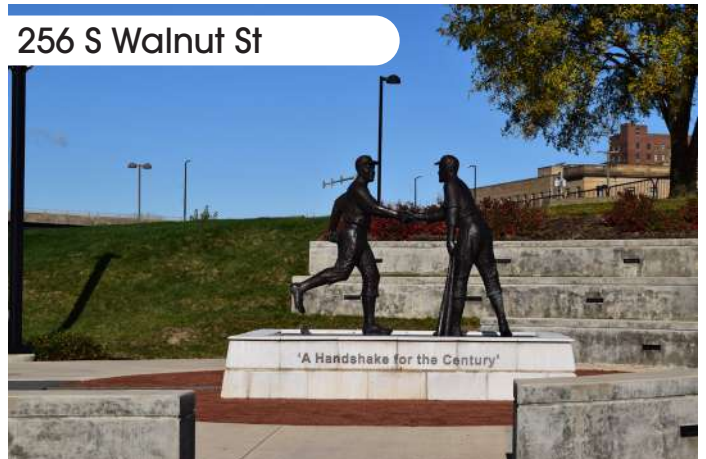
117 S Champion St



216 Andrews Ave



256 S Walnut St





# 365 E Boardman | Youngstown Flea



**SURFACE MATERIAL**  
Brick  
**SURFACE CONDITION**  
Fair  
**STRUCTURE**  
Occupied



**TRAFFIC VIEW**  
Southbound Traffic  
**OWNER**  
YOUNGSTOWN FLEA LLC

# 333 E Federal St #1821 | MS Consultants



**SURFACE MATERIAL**  
Brick  
**SURFACE CONDITION**  
Good  
**STRUCTURE**  
Occupied



**TRAFFIC VIEW**  
All Traffic  
**OWNER**  
MOSURE & SYRAKIS DESIGN

# 365 E Boardman | Youngstown Flea



**SURFACE MATERIAL**  
Brick  
**SURFACE CONDITION**  
Fair  
**STRUCTURE**  
Occupied



**TRAFFIC VIEW**  
Southbound Traffic  
**OWNER**  
YOUNGSTOWN FLEA LLC

# 333 E Federal St #1821 | MS Consultants



**SURFACE MATERIAL**  
Brick  
**SURFACE CONDITION**  
Good  
**STRUCTURE**  
Occupied



**TRAFFIC VIEW**  
All Traffic  
**OWNER**  
MOSURE & SYRAKIS DESIGN

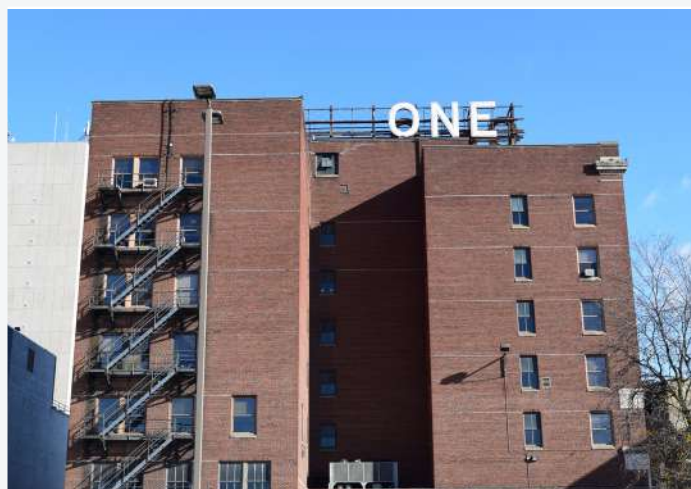
# 114 E Front | Olsavsky Jaminet Architects, Inc.



**SURFACE MATERIAL**  
Brick  
**SURFACE CONDITION**  
Good  
**STRUCTURE**  
Occupied

**TRAFFIC VIEW**  
Westbound Traffic  
**OWNER**  
JAMINET PROPERTIES LLC

# 25 E Boardman | Ohio One



**SURFACE MATERIAL**  
Brick  
**SURFACE CONDITION**  
Good  
**STRUCTURE**  
Occupied

**TRAFFIC VIEW**  
Southbound Traffic  
**OWNER**  
OHIO ONE CORPORATION



# 19 E Front



**SURFACE MATERIAL**  
Brick  
**SURFACE CONDITION**  
Good  
**STRUCTURE**  
Occupied

**TRAFFIC VIEW**  
Westbound Traffic  
**OWNER**  
ATWAY DEVELOPMENT COMPANY

# 7 E Front



**SURFACE MATERIAL**  
Brick  
**SURFACE CONDITION**  
Good  
**STRUCTURE**  
Occupied

**TRAFFIC VIEW**  
Northbound Traffic  
**OWNER**  
TIMLIN PROPERTIES LLC

# 139 E Boardman



**SURFACE MATERIAL**  
Brick  
**SURFACE CONDITION**  
Good  
**STRUCTURE**  
Occupied

**TRAFFIC VIEW**  
Eastbound Traffic  
**OWNER**  
FIRST ROW REALTY

# 99 S Walnut



**SURFACE MATERIAL**  
Brick  
**SURFACE CONDITION**  
Good  
**STRUCTURE**  
Occupied

**TRAFFIC VIEW**  
  
**OWNER**  
UNITED STATES OF AMERICA

# 250 E Federal



**SURFACE MATERIAL**  
Brick  
**SURFACE CONDITION**  
Good  
**STRUCTURE**  
Occupied

**TRAFFIC VIEW**  
Westbound Traffic  
**OWNER**  
MAHONING VALLEY  
HISTORICAL SOCIETY

# 350 E Federal



**SURFACE MATERIAL**  
Brick  
**SURFACE CONDITION**  
Good  
**STRUCTURE**  
Occupied

**TRAFFIC VIEW**  
Eastbound Traffic  
**OWNER**  
TANSU LLC



# Douds Alley | USPS Carrier Lot



**SURFACE MATERIAL**  
Brick  
**SURFACE CONDITION**  
Good  
**STRUCTURE**  
Occupied

**TRAFFIC VIEW**  
Eastbound Traffic  
**OWNER**  
UNITED STATES OF AMERICA

# 201 E Commerce | Commerce Building



**SURFACE MATERIAL**  
Concrete  
**SURFACE CONDITION**  
Good  
**STRUCTURE**  
Occupied

**TRAFFIC VIEW**  
Westbound Traffic  
**OWNER**  
WESTERN RESERVE  
PORT AUTHORITY

# 101 E Federal | Eastern Gateway



**SURFACE MATERIAL**  
Brick  
**SURFACE CONDITION**  
Good  
**STRUCTURE**  
Occupied

**TRAFFIC VIEW**  
All Traffic  
**OWNER**  
STATE OF OHIO

# 17 N Champion | YMCA of Youngstown



**SURFACE MATERIAL**  
Brick  
**SURFACE CONDITION**  
Good, Fair  
**STRUCTURE**  
Occupied



**TRAFFIC VIEW**  
Southbound, Road Facing, Rear Traffic  
**OWNER**  
YMCA OF YOUNGSTOWN OHIO

# 44 E Federal | DoubleTree by Hilton Youngstown



**SURFACE MATERIAL**  
Brick  
**SURFACE CONDITION**  
Good  
**STRUCTURE**  
Occupied

**TRAFFIC VIEW**  
Rear Traffic  
**OWNER**  
YOUNGSTOWN STAMBAUGH  
HOTEL LLC

# 25 Market | International Towers



**SURFACE MATERIAL**  
Concrete  
**SURFACE CONDITION**  
Good  
**STRUCTURE**  
Occupied

**TRAFFIC VIEW**  
Northbound Traffic  
**OWNER**  
INTERNATIONAL TOWERS  
OHIO LTD



# 101 Market



**SURFACE MATERIAL**  
Brick  
**SURFACE CONDITION**  
Good  
**STRUCTURE**  
Occupied

**TRAFFIC VIEW**  
Northbound Traffic  
**OWNER**  
YO PROPERTIES 101 LLC

# 29 E Front | Suhar & Macejko LLC



**SURFACE MATERIAL**  
Brick  
**SURFACE CONDITION**  
Good  
**STRUCTURE**  
Occupied

**TRAFFIC VIEW**  
Eastbound Traffic  
**OWNER**  
JAMINET PROPERTIES LLC

# 16 W Boardman | Buckles Towing Service Ltd.



**SURFACE MATERIAL**  
Concrete  
**SURFACE CONDITION**  
Fair  
**STRUCTURE**  
Occupied

**TRAFFIC VIEW**  
Eastbound Traffic  
**OWNER**  
22 MARKET STREET OHIO LLC

# 27 Federal Plaza W



**SURFACE MATERIAL**  
Brick, Stucco  
**SURFACE CONDITION**  
Good, Fair  
**STRUCTURE**  
Vacant

**TRAFFIC VIEW**  
Road Facing Traffic  
**OWNER**  
BRICK PRINT LLC

# 107 W Federal



**SURFACE MATERIAL**  
Brick  
**SURFACE CONDITION**  
Poor  
**STRUCTURE**  
Occupied

**TRAFFIC VIEW**  
Eastbound Traffic  
**OWNER**  
JACK RABBIT LLC

# 123 W Federal



**SURFACE MATERIAL**  
Brick, Stucco  
**SURFACE CONDITION**  
Good, Fair  
**STRUCTURE**  
Vacant

**TRAFFIC VIEW**  
Westbound Traffic  
**OWNER**  
YOUNGSTOWN CENTRAL AREA  
COMMUNITY IMPROVEMENT CORP.



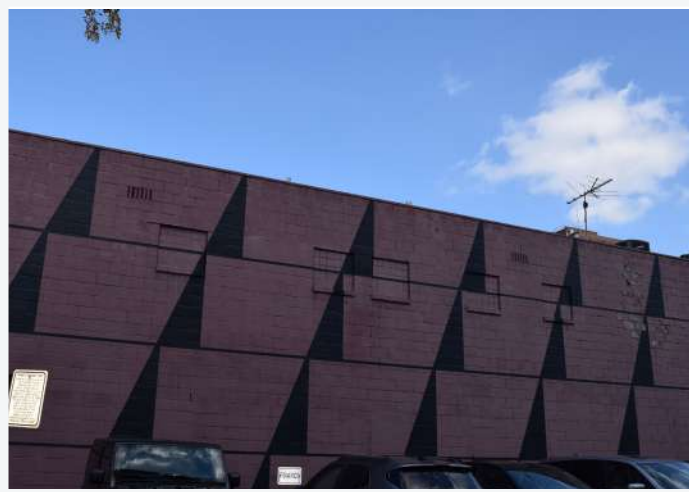
# 9 S Hazel



**SURFACE MATERIAL**  
Brick  
**SURFACE CONDITION**  
Fair  
**STRUCTURE**  
Occupied

**TRAFFIC VIEW**  
Northbound and Road Facing Traffic  
**OWNER**  
CORPORATE FINANCIAL CENTER

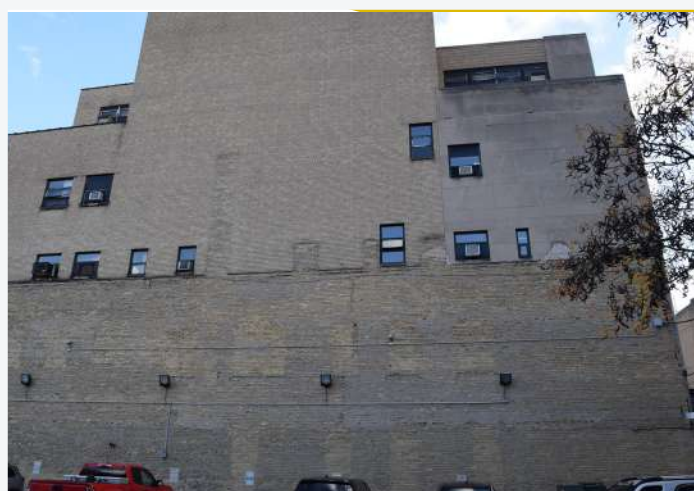
# 27 S Hazel



**SURFACE MATERIAL**  
Brick  
**SURFACE CONDITION**  
Good, Fair  
**STRUCTURE**  
Occupied

**TRAFFIC VIEW**  
Northbound Traffic  
**OWNER**  
BRENDA S. LEWIS

# 116 W Boardman | Youngstown Police Department



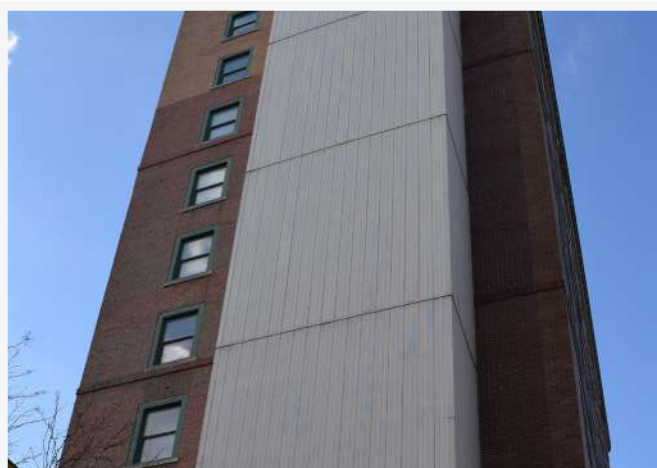
**SURFACE MATERIAL**  
Brick  
**SURFACE CONDITION**  
Fair, Poor  
**STRUCTURE**  
Occupied

**TRAFFIC VIEW**  
Eastbound Traffic  
**OWNER**  
CITY OF YOUNGSTOWN

# 131 W Boardman | Youngstown Metropolitan Housing Authority



**SURFACE MATERIAL**  
Metal  
**SURFACE CONDITION**  
Good  
**STRUCTURE**  
Occupied



**TRAFFIC VIEW**  
Westbound Traffic  
**OWNER**  
YMHA

# 101 W Boardman | WFMJ-TV



**SURFACE MATERIAL**  
Brick  
**SURFACE CONDITION**  
Good  
**STRUCTURE**  
Occupied

**TRAFFIC VIEW**  
Eastbound Traffic  
**OWNER**  
WFMJ TELEVISION INC

# 27 W Federal



**SURFACE MATERIAL**  
Metal, Stone  
**SURFACE CONDITION**  
Fair  
**STRUCTURE**  
Vacant

**TRAFFIC VIEW**  
Eastbound Traffic  
**OWNER**  
BRICK PRINT LLC



# 131 W Federal | Seventh District Court-Appeals



**SURFACE MATERIAL**  
Stone  
**SURFACE CONDITION**  
Good  
**STRUCTURE**  
Occupied

**TRAFFIC VIEW**  
Westbound and Road Facing Traffic  
**OWNER**  
YOUNGSTOWN CENTRAL AREA

# 241 W Federal | Youngstown Business Incubator



**SURFACE MATERIAL**  
Brick  
**SURFACE CONDITION**  
Good  
**STRUCTURE**  
Occupied

**TRAFFIC VIEW**  
Westbound and Eastbound Traffic  
**OWNER**  
YOUNGSTOWN EDISON  
INCUBATOR CORP.

# 275 W Federal | Premier Bank



**SURFACE MATERIAL**  
Brick, Masonry  
**SURFACE CONDITION**  
Good  
**STRUCTURE**  
Occupied

**TRAFFIC VIEW**  
Eastbound and Road Facing Traffic  
**OWNER**  
HOME SAVINGS & LOAN CO

# 260 W Federal | DeYor Performing Arts Center



**SURFACE MATERIAL**  
Concrete, Brick  
**SURFACE CONDITION**  
Good  
**STRUCTURE**  
Occupied



**TRAFFIC VIEW**  
Westbound and Eastbound Traffic  
**OWNER**  
YOUNGSTOWN SYMPHONY  
SOCIETY

# 306 W Federal | Sandel's Loan Inc



**SURFACE MATERIAL**  
Brick  
**SURFACE CONDITION**  
Fair  
**STRUCTURE**  
Occupied

**TRAFFIC VIEW**  
Westbound Traffic  
**OWNER**  
FINE HOLDINGS LLC

# 325 W Federal | Tyler History Center



**SURFACE MATERIAL**  
Brick  
**SURFACE CONDITION**  
Good  
**STRUCTURE**  
Occupied



**TRAFFIC VIEW**  
Westbound and Eastbound Traffic  
**OWNER**  
MAHONING VALLEY  
HISTORICAL SOCIETY



# 316 W Federal | Armies' Electronics



**SURFACE MATERIAL**  
Brick, Stucco, Wood  
**SURFACE CONDITION**  
Good  
**STRUCTURE**  
Occupied, Underutilized



**TRAFFIC VIEW**  
Westbound and Road Facing Traffic  
**OWNER**  
MARIE A MAUERMAN

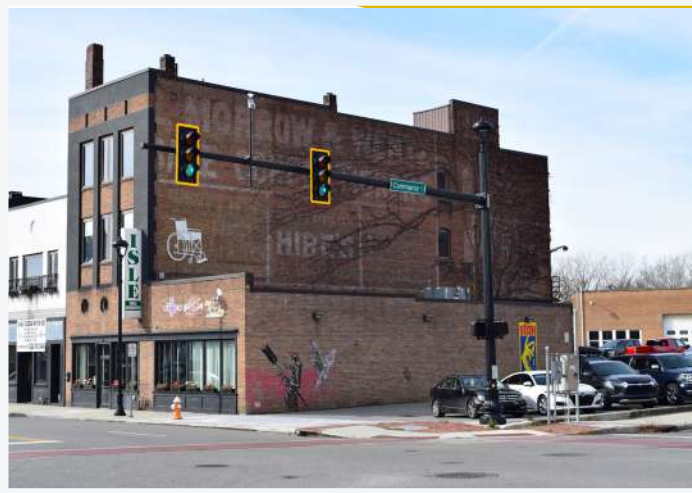
## 24 Fifth Ave



**SURFACE MATERIAL**  
Brick  
**SURFACE CONDITION**  
Good  
**STRUCTURE**  
Underutilized, Vacant

**TRAFFIC VIEW**  
Northbound Traffic  
**OWNER**  
JACK RABBIT LLC

# 32 Fifth Ave | Isle



**SURFACE MATERIAL**  
Brick  
**SURFACE CONDITION**  
Good  
**STRUCTURE**  
Occupied

**TRAFFIC VIEW**  
Southbound Traffic  
**OWNER**  
JACK RABBIT LLC

# 40 N Phelps | Youngstown Axe



**SURFACE MATERIAL**  
Brick  
**SURFACE CONDITION**  
Fair  
**STRUCTURE**  
Vacant

**TRAFFIC VIEW**  
Rear Traffic  
**OWNER**  
DOWNTOWN ENTERPRISE LLC

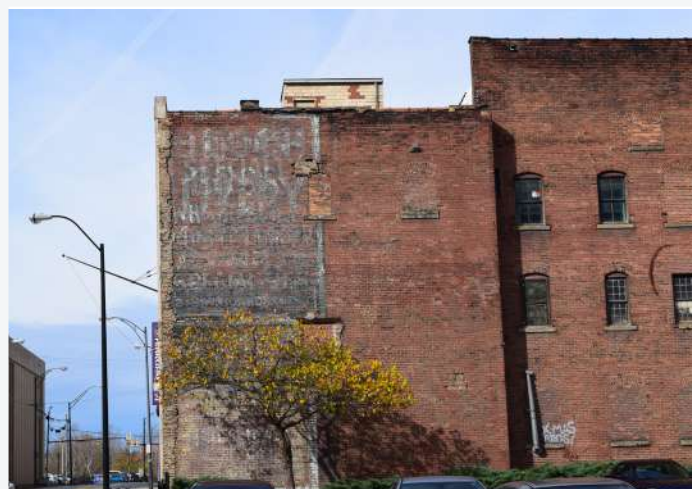
# 110 W Federal | Knox Building



**SURFACE MATERIAL**  
Brick  
**SURFACE CONDITION**  
Good  
**STRUCTURE**  
Occupied

**TRAFFIC VIEW**  
Road Facing Traffic  
**OWNER**  
110 WEST LLC

# 218 W Boardman | Ballet Western Reserve Inc

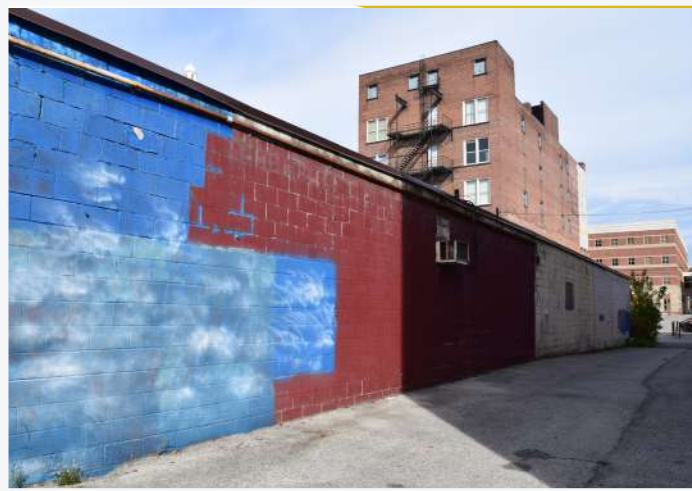


**SURFACE MATERIAL**  
Brick  
**SURFACE CONDITION**  
Good, Fair  
**STRUCTURE**  
Occupied

**TRAFFIC VIEW**  
Westbound Traffic  
**OWNER**  
BALLET WESTERN RESERVE



## 228 W Boardman | Geo's Music



**SURFACE MATERIAL**  
Concrete  
**SURFACE CONDITION**  
Good  
**STRUCTURE**  
Underutilized

**TRAFFIC VIEW**  
Westbound Traffic  
**OWNER**  
WILLIAM S BEGALLA

## 236 W Boardman | America Makes



**SURFACE MATERIAL**  
Brick  
**SURFACE CONDITION**  
Good  
**STRUCTURE**  
Occupied

**TRAFFIC VIEW**  
Eastbound Traffic  
**OWNER**  
YOUNGSTOWN EDISON  
INCUBATOR CORP.

# 107 Vindicator Sq | The Vindicator Printing Company



**SURFACE MATERIAL**  
Masonry  
**SURFACE CONDITION**  
Good  
**STRUCTURE**  
Occupied

**TRAFFIC VIEW**  
Eastbound, Westbound, and  
Road Facing Traffic  
**OWNER**  
VINDICATOR PRINTING

## 138 W Federal



**SURFACE MATERIAL**  
Brick  
**SURFACE CONDITION**  
Fair  
**STRUCTURE**  
Vacant

**TRAFFIC VIEW**  
Westbound and Road Facing Traffic  
**OWNER**  
CITY OF YOUNGSTOWN

# 23 N Hazel

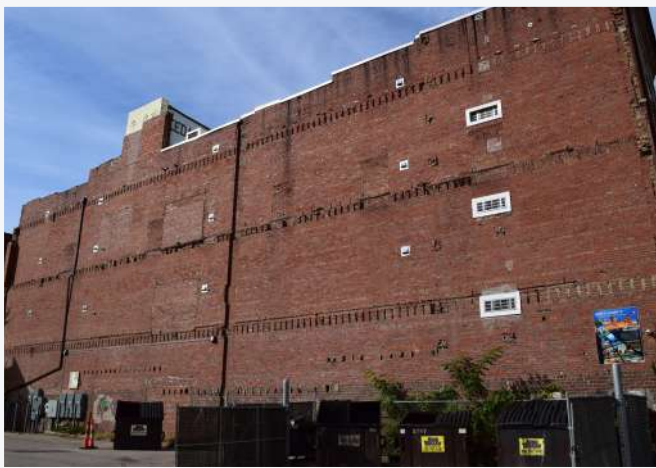


**SURFACE MATERIAL**  
Brick  
**SURFACE CONDITION**  
Good, Fair  
**STRUCTURE**  
Vacant, Underutilized



**TRAFFIC VIEW**  
Eastbound and Westbound Traffic  
**OWNER**  
YO PROPERTIES 23 LLC

# 23 N Hazel



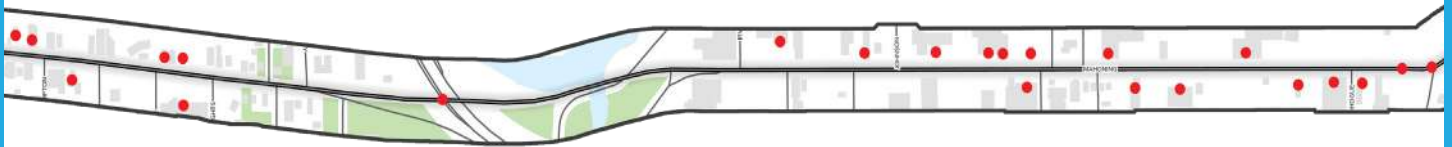
**SURFACE MATERIAL**  
Brick  
**SURFACE CONDITION**  
Good, Fair  
**STRUCTURE**  
Vacant, Underutilized



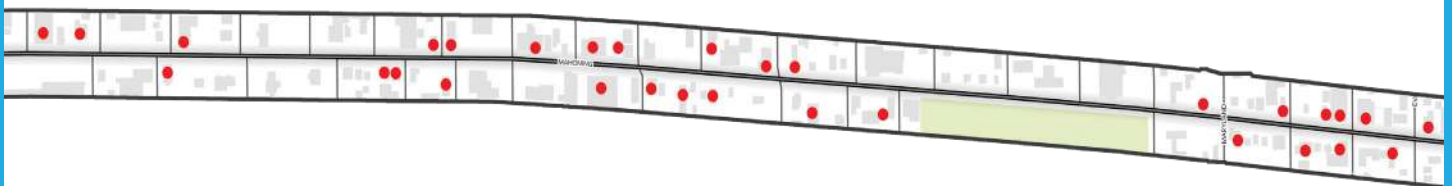
**TRAFFIC VIEW**  
Eastbound and Westbound Traffic  
**OWNER**  
YO PROPERTIES 23 LLC



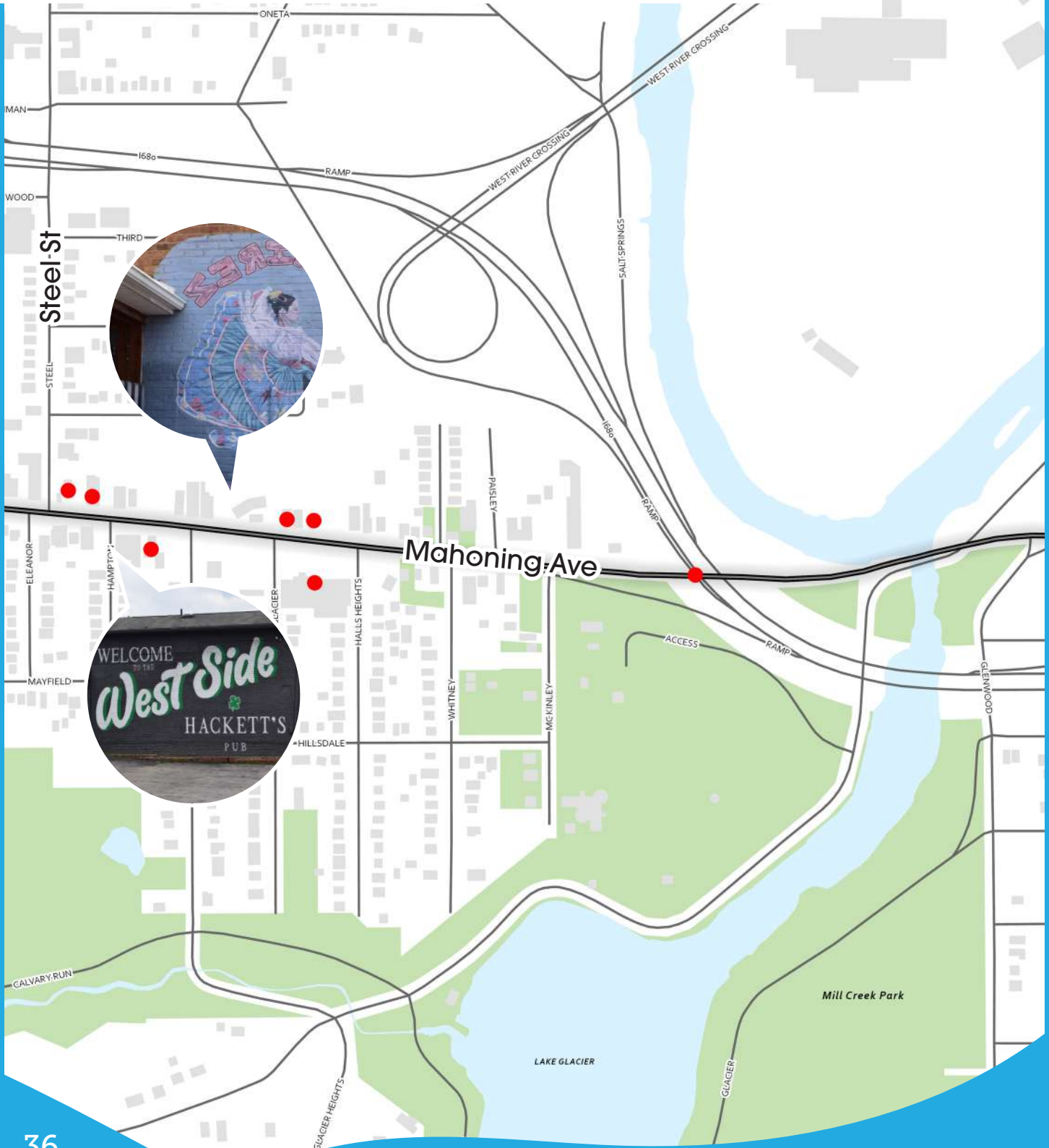
# Mahoning Avenue



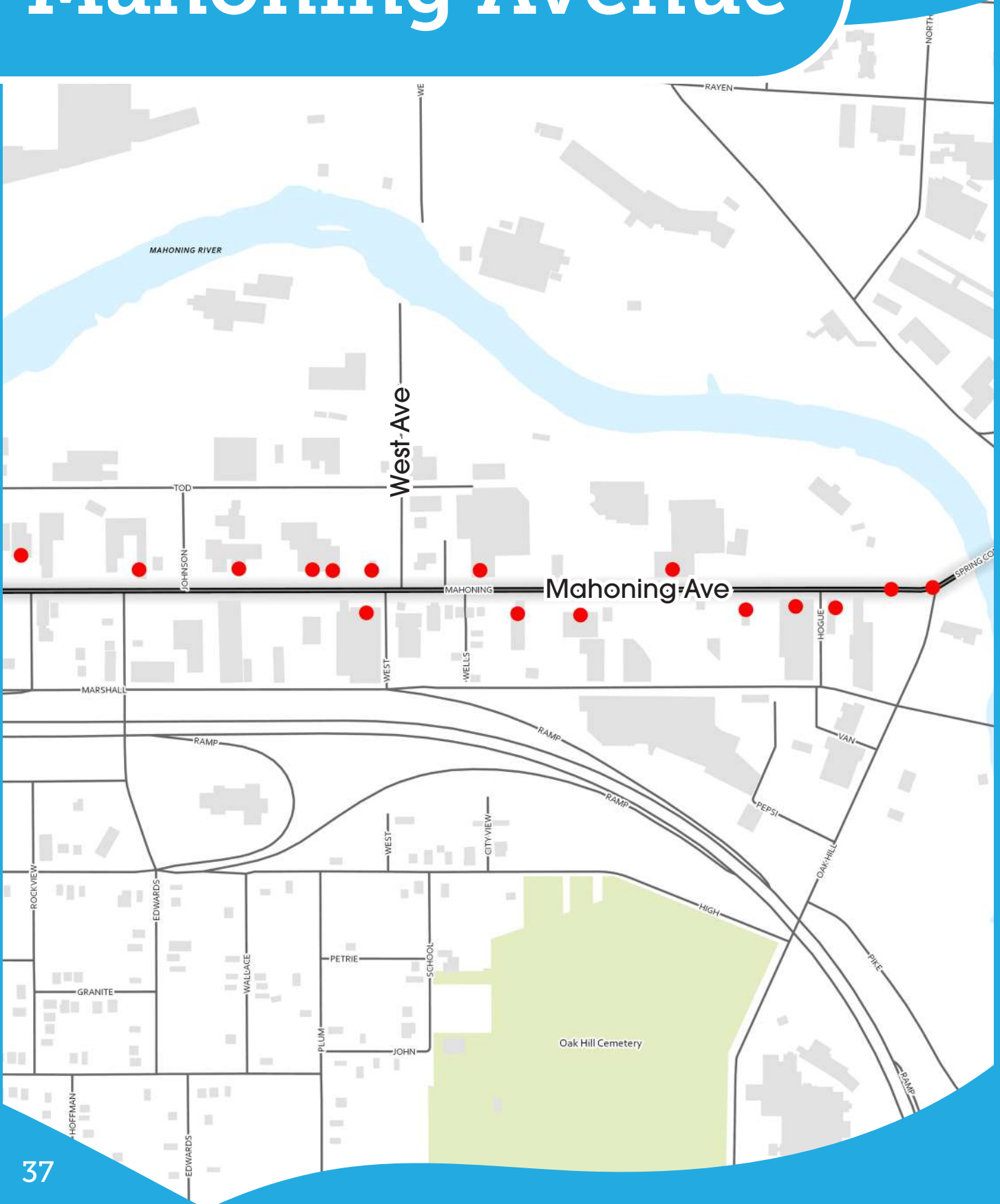
Mahoning Ave is a dense commercial corridor located on the west side including a mix of stand-alone store fronts and plaza like clusters of shops. This area has a number of bars and restaurants, the Michael Kusalaba branch of the public library, and many event venues. Mahoning Ave is also home of multiple EAG Commercial Property Revitalization locations. There is existing art on multiple buildings in the corridor and many opportunity sites close together. Westside Bowl is a hub of public art on this corridor, we recommend artists look at buildings nearby as possible opportunity sites.



# Mahoning Avenue

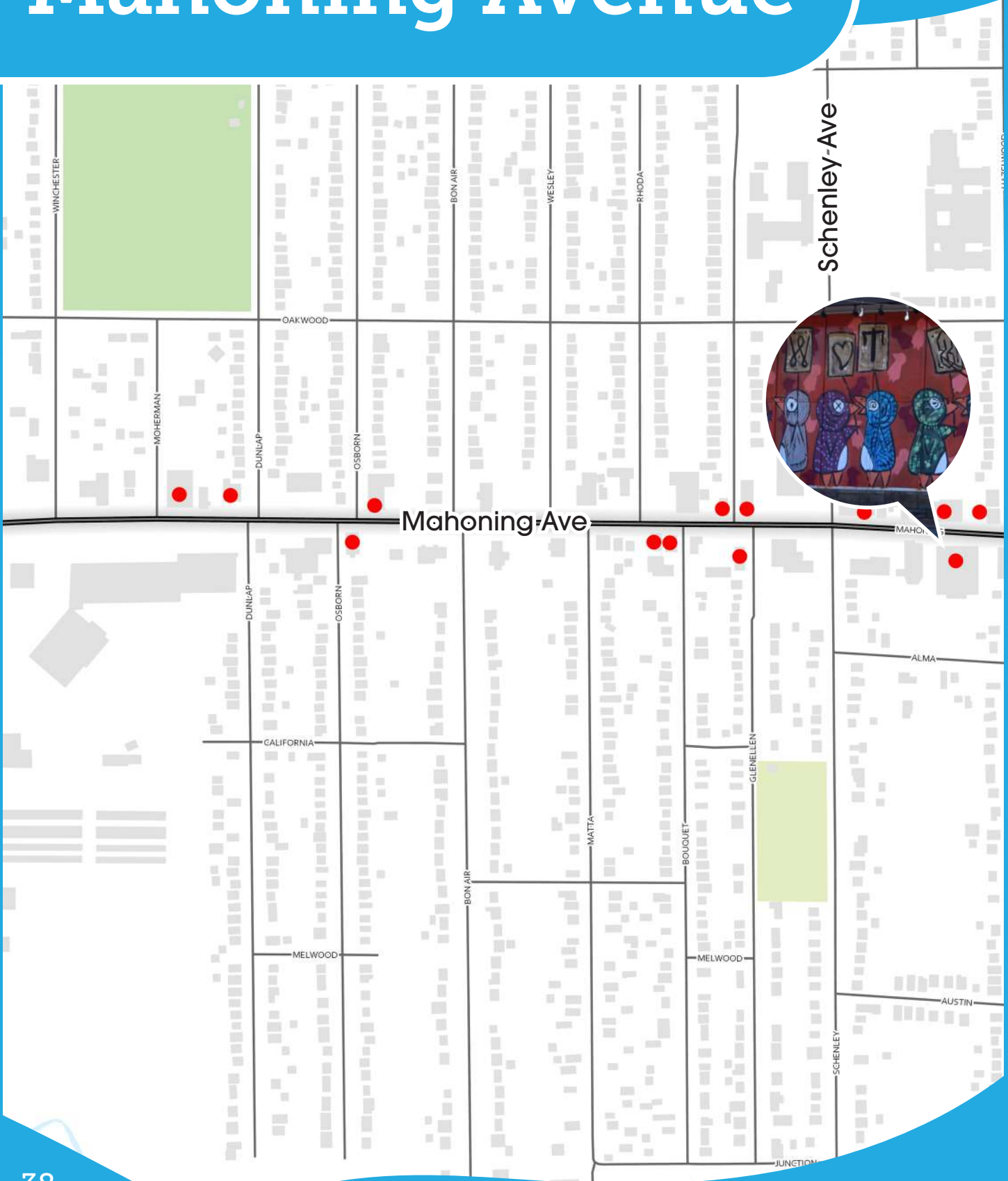


# Mahoning Avenue

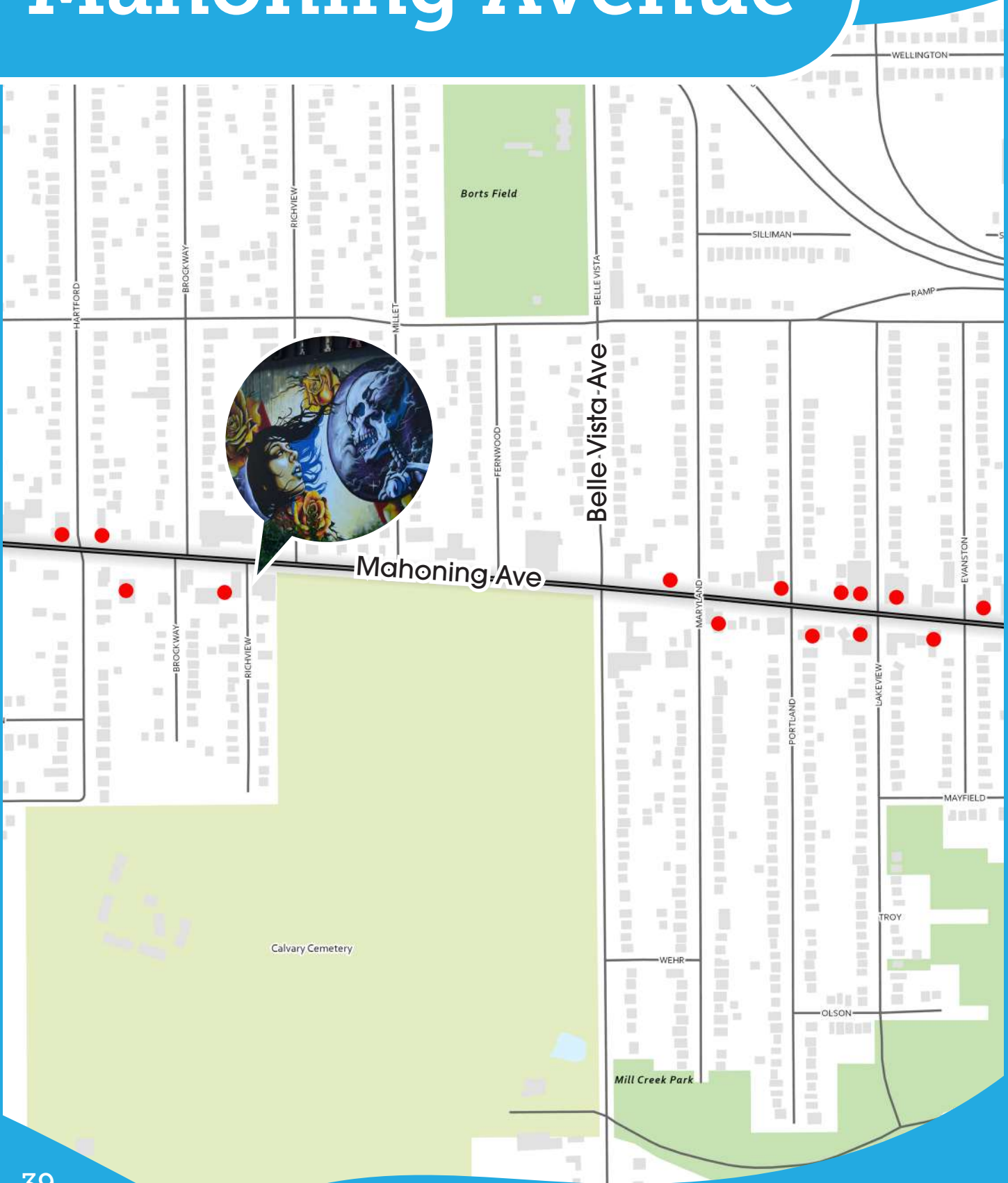




# Mahoning Avenue



# Mahoning Avenue



# Existing Mahoning Art

1578 Mahoning



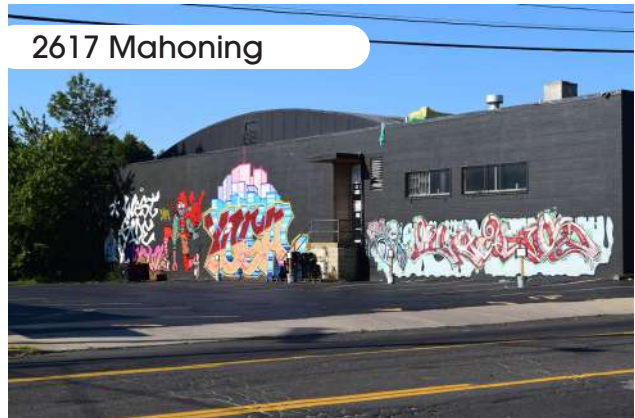
1597 Mahoning



2209 Mahoning



2617 Mahoning



2617 Mahoning



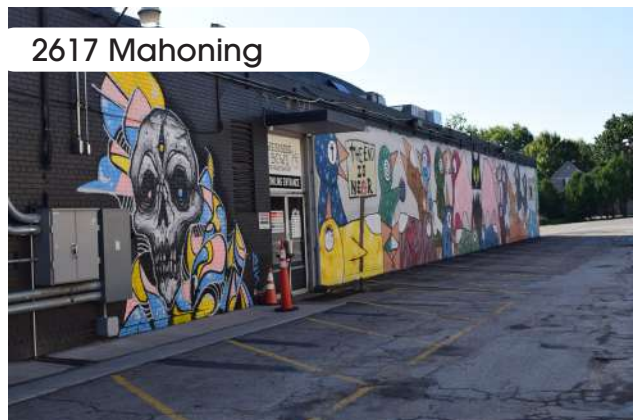
2617 Mahoning



2617 Mahoning



2617 Mahoning





# 1540 Mahoning | Apartment



**SURFACE MATERIAL**  
Brick  
**SURFACE CONDITION**  
Good  
**STRUCTURE**  
Vacant

**TRAFFIC VIEW**  
Westbound Traffic  
**OWNER**  
Sunray Homes LLC

# 1544 Mahoning | Little Lou's



**SURFACE MATERIAL**  
Brick  
**SURFACE CONDITION**  
Good  
**STRUCTURE**  
Occupied

**TRAFFIC VIEW**  
Eastbound Traffic  
**OWNER**  
Jacqueline Santiago

# 1535 Mahoning | Wonder Building



## **SURFACE MATERIAL**

Stucco

## **SURFACE CONDITION**

Poor-Fair

## **STRUCTURE**

Underutilized

## **TRAFFIC VIEW**

## **OWNER**

Brandywine Apartments  
Management Corporation

# 1623 Mahoning | Apartment



## **SURFACE MATERIAL**

Masonry

## **SURFACE CONDITION**

Poor

## **STRUCTURE**

Vacant

## **TRAFFIC VIEW**

## **OWNER**

DAVID H HASSAY

# 1597 Mahoning | Hackett's Pub



**SURFACE MATERIAL**  
Masonry  
**SURFACE CONDITION**  
Good  
**STRUCTURE**  
Occupied

**TRAFFIC VIEW**  
Westbound Traffic  
**OWNER**  
D B HACKETT AND COMPANY LLC

# 550 Mahoning | Bridge Near B+O Station



**SURFACE MATERIAL**  
Metal, Stone  
**SURFACE CONDITION**  
Good  
**STRUCTURE**



**TRAFFIC VIEW**  
  
**OWNER**  
Youngstown City



# 561 Mahoning



**SURFACE MATERIAL**  
Brick  
**SURFACE CONDITION**  
Good  
**STRUCTURE**  
Vacant

**TRAFFIC VIEW**  
Westbound and Road Facing  
**OWNER**  
561 MAHONING AVENUE LLC

# 582 Mahoning



**SURFACE MATERIAL**  
Brick  
**SURFACE CONDITION**  
Good  
**STRUCTURE**  
Occupied

**TRAFFIC VIEW**  
Road Facing  
**OWNER**  
BRIER HILL SLAG CO

# 602 Mahoning



**SURFACE MATERIAL**

Brick

**SURFACE CONDITION**

Good

**STRUCTURE**

Occupied

**TRAFFIC VIEW**

Westbound Traffic

**OWNER**

BRIER HILL SLAG CO

# 604 Mahoning | WRTA



**SURFACE MATERIAL**

Stucco

**SURFACE CONDITION**

Good

**STRUCTURE**

Occupied



**TRAFFIC VIEW**

Westbound and Road Facing

**OWNER**

WESTERN RESERVE  
TRANSIT AUTHORITY

# 634 Mahoning | Bridge Near WRTA



## **SURFACE MATERIAL**

Concrete

## **SURFACE CONDITION**

Fair

## **STRUCTURE**

## **TRAFFIC VIEW**

## **OWNER**

Youngstown City

# 655 Mahoning | 3 Brothers Automotive Repairs



## **SURFACE MATERIAL**

Brick

## **SURFACE CONDITION**

Good

## **STRUCTURE**

Occupied

## **TRAFFIC VIEW**

Eastbound Traffic

## **OWNER**

MOHAMMAD F CHOUDHRY



# 715 Mahoning | Nexus Sound Studio



**SURFACE MATERIAL**  
Brick  
**SURFACE CONDITION**  
Good  
**STRUCTURE**  
Occupied

**TRAFFIC VIEW**  
Eastbound Traffic  
**OWNER**  
ALEXANDER THOMAS

# 730 Mahoning | Clearview Architectural Products



**SURFACE MATERIAL**  
Metal, Brick, Concrete  
**SURFACE CONDITION**  
Good  
**STRUCTURE**  
For Sale



**TRAFFIC VIEW**  
Road Facing  
**OWNER**  
WESTERN RESERVE  
TRANSIT AUTHORITY

# 805 Mahoning | Comfort Keepers of Youngstown, OH



**SURFACE MATERIAL**  
Brick, Concrete  
**SURFACE CONDITION**  
Good  
**STRUCTURE**  
Occupied

**TRAFFIC VIEW**  
Road Facing  
**OWNER**  
MIRKIN AND ASSOCIATES INC

# 810 Mahoning | H H Pincham Moving Co.



**SURFACE MATERIAL**  
Brick  
**SURFACE CONDITION**  
Good  
**STRUCTURE**  
Vacant

**TRAFFIC VIEW**  
Eastbound Traffic  
**OWNER**  
KJS LAND LLC

# 820 Mahoning | Bob's Auto Sale



**SURFACE MATERIAL**  
Brick  
**SURFACE CONDITION**  
Good  
**STRUCTURE**  
Vacant

**TRAFFIC VIEW**  
Westbound Traffic  
**OWNER**  
KJS LAND LLC

# 832 Mahoning | Santisi Wholesale Food Co



**SURFACE MATERIAL**  
Brick  
**SURFACE CONDITION**  
Poor-Fair  
**STRUCTURE**  
Occupied



**TRAFFIC VIEW**  
Eastbound Traffic  
**OWNER**  
KJS LAND LLC



# 854 Mahoning | Webb Supply



**SURFACE MATERIAL**  
Brick  
**SURFACE CONDITION**  
Fair  
**STRUCTURE**  
Occupied

**TRAFFIC VIEW**  
Eastbound Traffic  
**OWNER**  
BLOWELL AVENUE LLC

# 892 Mahoning | Bud's Sign Shop, Inc.



**SURFACE MATERIAL**  
Brick  
**SURFACE CONDITION**  
Good  
**STRUCTURE**  
Occupied



**TRAFFIC VIEW**  
Westbound and Road Facing  
**OWNER**  
ROBERT L PERKINS

# 1004 Mahoning | Eljer Plumbing Fixtures



## **SURFACE MATERIAL**

Metal

## **SURFACE CONDITION**

Good

## **STRUCTURE**

Occupied

## **TRAFFIC VIEW**

Westbound and Road Facing

## **OWNER**

YS REALTY LLC

# 1630 Mahoning



## **SURFACE MATERIAL**

Brick

## **SURFACE CONDITION**

Fair

## **STRUCTURE**

Occupied

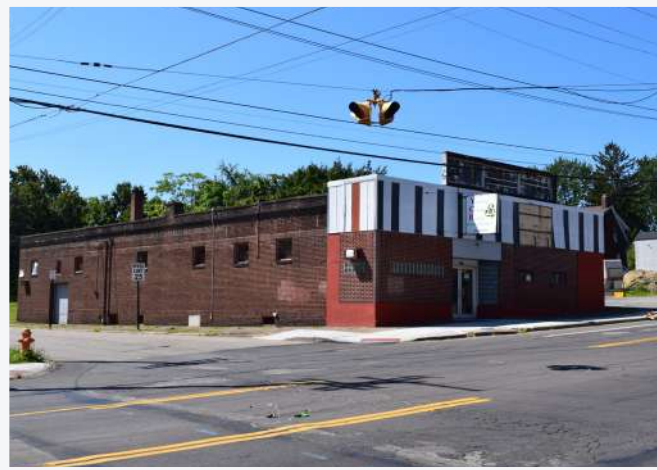
## **TRAFFIC VIEW**

Westbound and Eastbound Traffic

## **OWNER**

PREMIER REAL ESTATE  
MANAGEMENT LTD

# 1707 Mahoning | YCR



**SURFACE MATERIAL**  
Brick  
**SURFACE CONDITION**  
Fair  
**STRUCTURE**  
Occupied

**TRAFFIC VIEW**  
Westbound Traffic  
**OWNER**  
JOHN YASKO

# 1708 Mahoning



**SURFACE MATERIAL**  
Brick  
**SURFACE CONDITION**  
Good  
**STRUCTURE**  
Vacant

**TRAFFIC VIEW**  
Westbound Traffic  
**OWNER**  
G&S VENDING LLC



# 1698 Mahoning | All City Sports Bar & Grille



**SURFACE MATERIAL**  
Brick, Wood  
**SURFACE CONDITION**  
Fair  
**STRUCTURE**  
Vacant

**TRAFFIC VIEW**  
Westbound and Eastbound Traffic  
**OWNER**  
ISAIAH R POINDEXTER &  
BRANDON BROWN

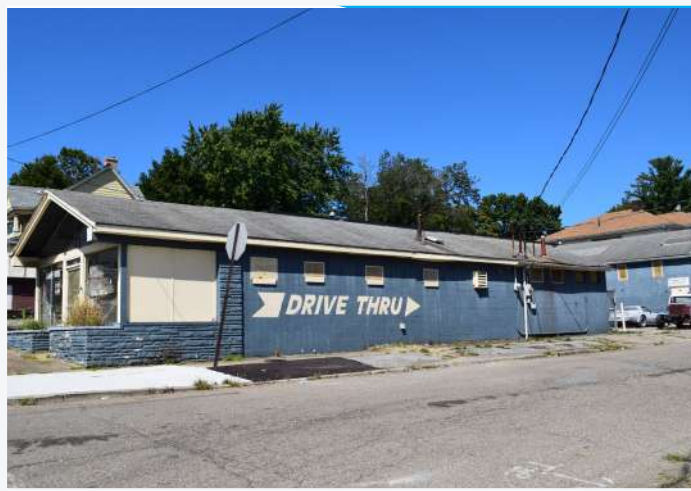
# 1727 Mahoning | Radon Raiders



**SURFACE MATERIAL**  
Brick  
**SURFACE CONDITION**  
Good  
**STRUCTURE**  
Vacant

**TRAFFIC VIEW**  
Westbound Traffic  
**OWNER**  
J KHOURY PROPERTY LLC

# 1730 Mahoning | Blue Drive Thru



**SURFACE MATERIAL**  
Brick  
**SURFACE CONDITION**  
Good  
**STRUCTURE**  
Vacant

**TRAFFIC VIEW**  
Westbound Traffic  
**OWNER**  
RICAR INC

# 1746 Mahoning | Bacho's Florals



**SURFACE MATERIAL**  
Brick  
**SURFACE CONDITION**  
Good  
**STRUCTURE**  
Occupied

**TRAFFIC VIEW**  
Westbound Traffic  
**OWNER**  
WILLIAM J BACHO JR & L A

# 1759 Mahoning



**SURFACE MATERIAL**  
Brick  
**SURFACE CONDITION**  
Good  
**STRUCTURE**  
Vacant

**TRAFFIC VIEW**  
Westbound and Eastbound Traffic  
**OWNER**  
FRANCISCO O HENRIQUEZ

# 1810 Mahoning | Hunan Express



**SURFACE MATERIAL**  
Brick  
**SURFACE CONDITION**  
Good  
**STRUCTURE**  
Occupied

**TRAFFIC VIEW**  
Westbound Traffic  
**OWNER**  
LIN-MEI FEN



# 1687 Mahoning | Mahoning Wine Shoppe



**SURFACE MATERIAL**  
Brick, Wood  
**SURFACE CONDITION**  
Good  
**STRUCTURE**  
Occupied

**TRAFFIC VIEW**  
Westbound and Eastbound Traffic  
**OWNER**  
DHILLON FAMILY  
ENTERPRISES 22 LLC

# 1666 Mahoning | Club 22



**SURFACE MATERIAL**  
Brick  
**SURFACE CONDITION**  
Good  
**STRUCTURE**  
Occupied

**TRAFFIC VIEW**  
Westbound and Eastbound Traffic  
**OWNER**  
TERRANCE SIMMS &  
JASON PINKARD

# 1648 Mahoning | Schulte's Thrift



**SURFACE MATERIAL**  
Brick  
**SURFACE CONDITION**  
Good  
**STRUCTURE**  
Occupied

**TRAFFIC VIEW**  
Westbound and Eastbound Traffic  
**OWNER**  
FREDERICK J SCHULTE &  
BETH A SCHULTE

# 2217 Mahoning [1]



**SURFACE MATERIAL**  
Brick, Concrete  
**SURFACE CONDITION**  
Good  
**STRUCTURE**  
Occupied



**TRAFFIC VIEW**  
Westbound, Eastbound, and  
Road Facing Traffic  
**OWNER**  
ECO CARE LLC

# 2217 Mahoning [2]



**SURFACE MATERIAL**  
Brick  
**SURFACE CONDITION**  
Good  
**STRUCTURE**  
Occupied

**TRAFFIC VIEW**  
Westbound and Eastbound Traffic  
**OWNER**  
ECO CARE LLC

# 2319 Mahoning



**SURFACE MATERIAL**  
Brick, Wood  
**SURFACE CONDITION**  
Fair  
**STRUCTURE**  
Underutilized

**TRAFFIC VIEW**  
Westbound and Eastbound Traffic  
**OWNER**  
THEODORE R MILLER



# 2328 Mahoning | Danny G's Party Shop



**SURFACE MATERIAL**  
Brick  
**SURFACE CONDITION**  
Good  
**STRUCTURE**  
Occupied

**TRAFFIC VIEW**  
Westbound Traffic  
**OWNER**  
MUKH TAR ALBAADANI

# 2402 Mahoning



**SURFACE MATERIAL**  
Brick  
**SURFACE CONDITION**  
Good  
**STRUCTURE**  
Underutilized

**TRAFFIC VIEW**  
Westbound Traffic  
**OWNER**  
WEST SIDE TIRE & SERVICE INC

# 2429 Mahoning



**SURFACE MATERIAL**  
Brick  
**SURFACE CONDITION**  
Good  
**STRUCTURE**

**TRAFFIC VIEW**  
Westbound Traffic  
**OWNER**  
S GLENN ESPOSITO &  
DENISE M ESPOSITO

# 2432 Mahoning



**SURFACE MATERIAL**  
Brick, Wood  
**SURFACE CONDITION**  
Poor  
**STRUCTURE**  
Underutilized

**TRAFFIC VIEW**  
Westbound and Eastbound Traffic  
**OWNER**  
ARTHUR THOMPSON

# 2509 Mahoning



**SURFACE MATERIAL**  
Brick  
**SURFACE CONDITION**  
Good  
**STRUCTURE**

**TRAFFIC VIEW**  
Westbound and Eastbound Traffic  
**OWNER**  
DWIGHT R KRANTZ &  
VANESSA L KRANTZ

# 2528 Mahoning | Vieras Vison



**SURFACE MATERIAL**  
Brick  
**SURFACE CONDITION**  
Poor-Good  
**STRUCTURE**



**TRAFFIC VIEW**  
Eastbound Traffic  
**OWNER**  
YOUNGSTOWN HARDWARE INC



# 2521 Mahoning



**SURFACE MATERIAL**  
Brick  
**SURFACE CONDITION**  
Good  
**STRUCTURE**  
Underutilized

**TRAFFIC VIEW**  
Westbound Traffic  
**OWNER**  
MARK A RESEK

# 2606 Mahoning | Dnm Autos

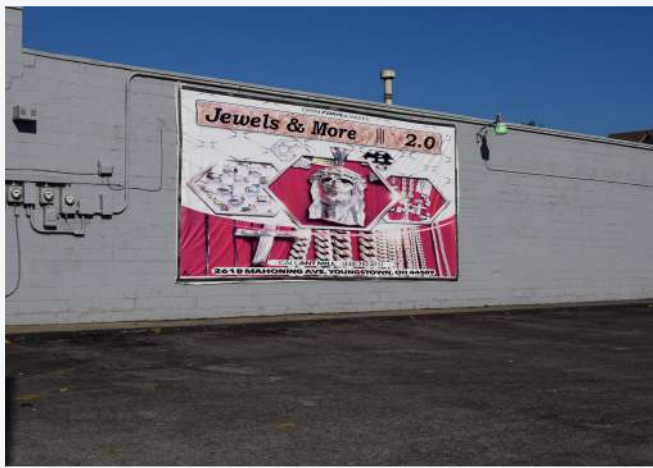


**SURFACE MATERIAL**  
Concrete  
**SURFACE CONDITION**  
Good  
**STRUCTURE**  
Underutilized



**TRAFFIC VIEW**  
Westbound and Eastbound Traffic  
**OWNER**  
BRIAN TORRES

# 2618 Mahoning | Jewels & More 2.0



**SURFACE MATERIAL**  
Brick  
**SURFACE CONDITION**  
Fair-Good  
**STRUCTURE**  
Occupied

**TRAFFIC VIEW**  
Westbound and Eastbound Traffic  
**OWNER**  
NY REALTY OF YOUNGSTOWN LLC

# 2703 Mahoning | Gran Buildings



**SURFACE MATERIAL**  
Brick, Concrete  
**SURFACE CONDITION**  
Good  
**STRUCTURE**  
Underutilized

**TRAFFIC VIEW**  
Westbound and Eastbound Traffic  
**OWNER**  
GRAND MAHONING LLC

# 2828 Mahoning | Powerhouse Equipment Co



**SURFACE MATERIAL**  
Brick, Concrete  
**SURFACE CONDITION**  
Fair-Good  
**STRUCTURE**  
Occupied

**TRAFFIC VIEW**  
Westbound, Eastbound, and  
Road Facing Traffic  
**OWNER**  
SEAN LISCIC & JEFFREY LISCIC

# 2837 Mahoning | Apartment

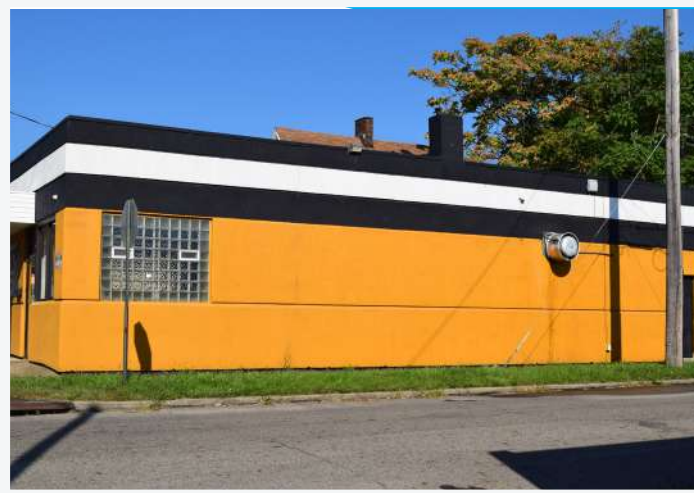


**SURFACE MATERIAL**  
Brick, Concrete  
**SURFACE CONDITION**  
Good  
**STRUCTURE**  
Underutilized

**TRAFFIC VIEW**  
Westbound, Eastbound, and  
Road Facing Traffic  
**OWNER**  
DC HOME SERVICES LLC



# 2838 Mahoning | Top Notch Meals



**SURFACE MATERIAL**  
Concrete  
**SURFACE CONDITION**  
Good  
**STRUCTURE**  
Occupied

**TRAFFIC VIEW**  
Westbound Traffic  
**OWNER**  
KENDAIL TREMAINE BANKS TRUST

# 2903 Mahoning | Media Jacked



**SURFACE MATERIAL**  
Brick  
**SURFACE CONDITION**  
Good  
**STRUCTURE**  
Occupied

**TRAFFIC VIEW**  
Westbound Traffic  
**OWNER**  
FREEMONT MAHONING STATE  
PROPERTIES LLC

# 2907 Mahoning



**SURFACE MATERIAL**  
Metal  
**SURFACE CONDITION**  
Fair  
**STRUCTURE**  
Underutilized

**TRAFFIC VIEW**  
Road Facing Traffic  
**OWNER**  
RICHARD SANTHA &  
SABRENA GRANTLING

# 7 N Osborn



**SURFACE MATERIAL**  
Brick  
**SURFACE CONDITION**  
Good  
**STRUCTURE**

**TRAFFIC VIEW**  
Westbound Traffic  
**OWNER**  
OHIO BELL TELEPHONE CO

# 3143 Mahoning



**SURFACE MATERIAL**  
Brick, Metal  
**SURFACE CONDITION**  
Good  
**STRUCTURE**  
Occupied



**TRAFFIC VIEW**  
Westbound, Eastbound, and  
Road Facing Traffic  
**OWNER**  
Western Reserve Port Authority

# 3306 Mahoning

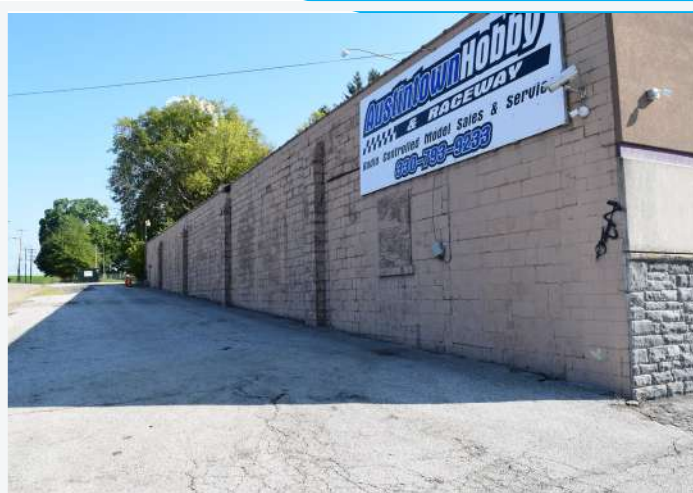


**SURFACE MATERIAL**  
Metal  
**SURFACE CONDITION**  
Good  
**STRUCTURE**  
Occupied

**TRAFFIC VIEW**  
Westbound Traffic  
**OWNER**  
ABDUL K SHAMSUDDIN &  
SUHARA SHAMSUDDIN



# 3320 Austintown Hobby and Raceway



## **SURFACE MATERIAL**

Brick

## **SURFACE CONDITION**

Poor

## **STRUCTURE**

Occupied

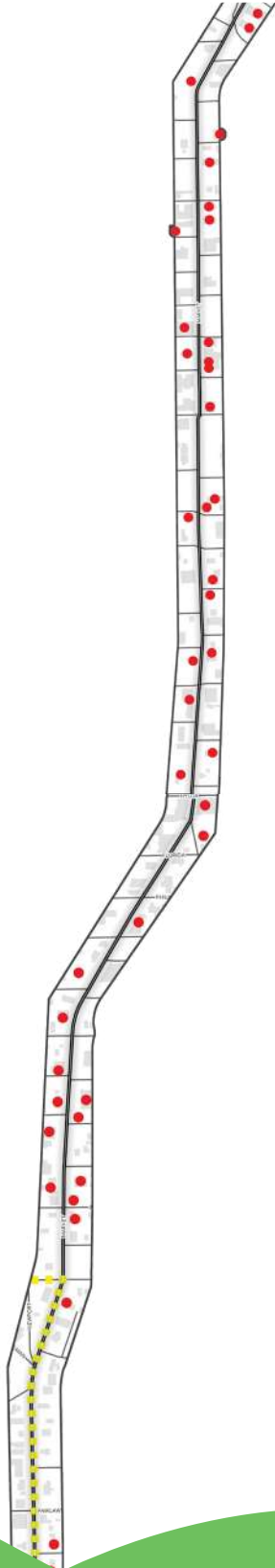
## **TRAFFIC VIEW**

Eastbound Traffic

## **OWNER**

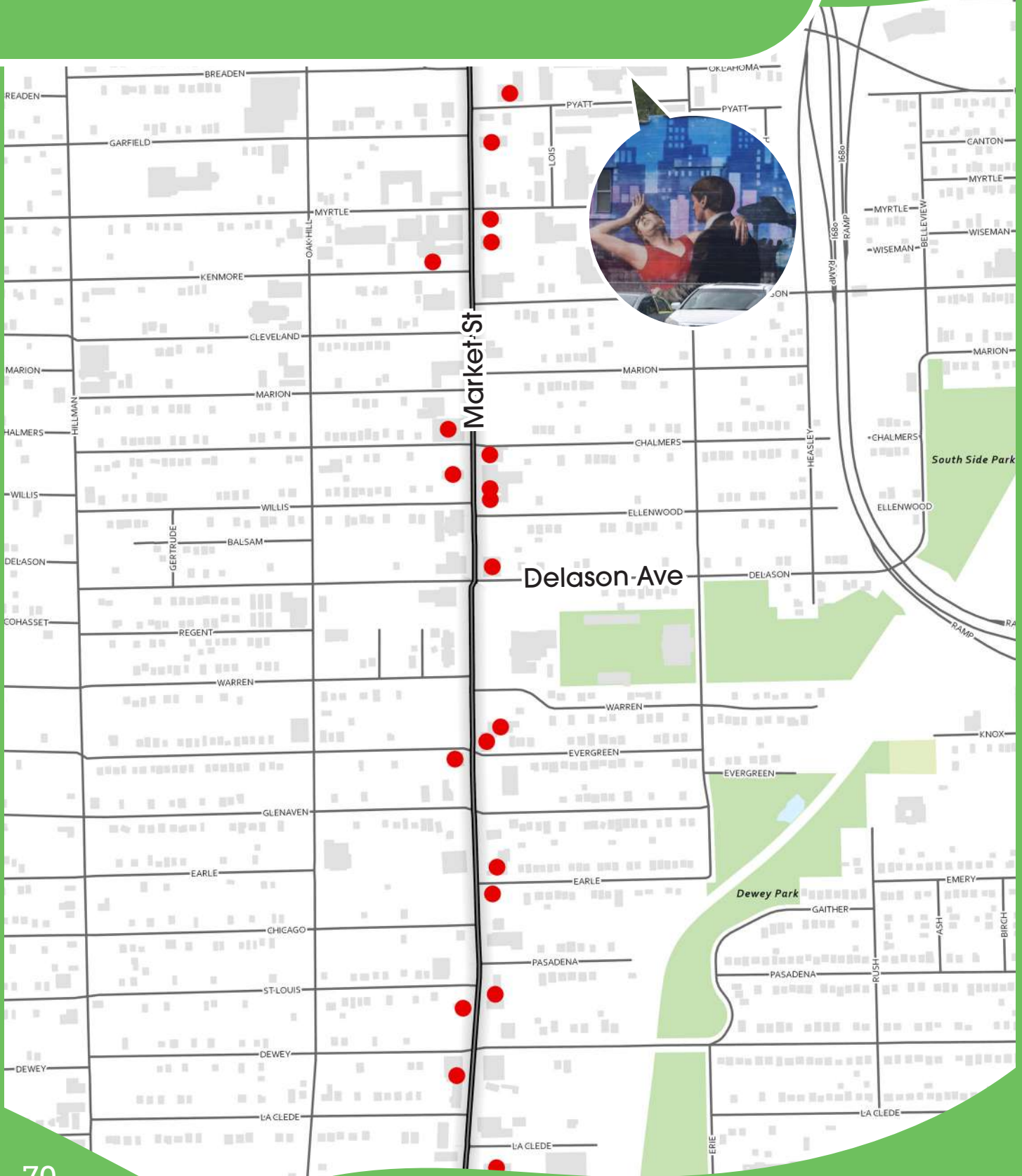
AUSTINTOWN HOBBY LLC

# Market Street



Market St. is a commercial centric corridor found on the south side. There is a mix of store front and larger buildings. There are many schools and day cares in the area as well as a branch of the Youngstown Library. There are some existing art pieces currently in the corridor including the "Welcome to Downtown Youngstown" mural which is an iconic entrance to the downtown area. There are many opportunity sites close together for possible development. These include larger expanses of green space that could house public art in different mediums such as sculpture.

# Market Street





# Market Street



# Existing Market Art

519 Market St



1000 Market St



2621 Market St



# 4411 Market | Dr. David Keast, Attorney at Law



**SURFACE MATERIAL**  
Wood  
**SURFACE CONDITION**  
Good  
**STRUCTURE**  
Occupied

**TRAFFIC VIEW**  
Road Facing Traffic  
**OWNER**  
WILLIAM DAVID KEAST

# 4323 Market | Leaf Relief



**SURFACE MATERIAL**  
Metal  
**SURFACE CONDITION**  
Good  
**STRUCTURE**  
Occupied

**TRAFFIC VIEW**  
Road Facing Traffic  
**OWNER**  
SAMUELS JOLANTA



# 3929 Market



## **SURFACE MATERIAL**

Brick

## **SURFACE CONDITION**

Good (NB), Fair (SB)

## **STRUCTURE**

Vacant

## **TRAFFIC VIEW**

Northbound and Southbound Traffic

## **OWNER**

NEWTON VAL II MURPHY

# 3707 Market | En-Ser Reprographics



## **SURFACE MATERIAL**

Brick

## **SURFACE CONDITION**

Fair

## **STRUCTURE**

Occupied

## **TRAFFIC VIEW**

Northbound Traffic

## **OWNER**

WISE ASSETS LLC

# 3625 Market | The Community Spot



## **SURFACE MATERIAL**

Brick

## **SURFACE CONDITION**

Good

## **STRUCTURE**

Vacant

## **TRAFFIC VIEW**

Northbound Traffic

## **OWNER**

GIBSON JACKSON PROPERTIES LLC

# 3616 Market | Serenity Tattoos



## **SURFACE MATERIAL**

Brick

## **SURFACE CONDITION**

Good

## **STRUCTURE**

Occupied

## **TRAFFIC VIEW**

Northbound Traffic

## **OWNER**

MARVA C PARKER

# 3613 Market | Kollege Tots and Kids II



## **SURFACE MATERIAL**

Metal

## **SURFACE CONDITION**

Good

## **STRUCTURE**

Occupied

## **TRAFFIC VIEW**

Southbound and Northbound Traffic

## **OWNER**

KOLLEGE TOTS & KIDS II INC

# 3431 Market | Warriors Inc. Chess House



## **SURFACE MATERIAL**

Brick

## **SURFACE CONDITION**

Fair

## **STRUCTURE**

Occupied

## **TRAFFIC VIEW**

Northbound Traffic

## **OWNER**

WARRIORS INC



# 3500 Market | Kicks Lounge



## **SURFACE MATERIAL**

Brick

## **SURFACE CONDITION**

Good

## **STRUCTURE**

Occupied

## **TRAFFIC VIEW**

Southbound and Road Facing Traffic

## **OWNER**

WILLIAM S BEGALLA

# 3420 Market | Dvyne Beauty Supply



## **SURFACE MATERIAL**

Brick

## **SURFACE CONDITION**

Good

## **STRUCTURE**

Occupied

## **TRAFFIC VIEW**

Northbound, Southbound,  
and Road Facing Traffic

## **OWNER**

HEA KIM & KEA KIM

## 3405 Market | Academy for Urban Scholars High School



**SURFACE MATERIAL**  
Brick, Tiles  
**SURFACE CONDITION**  
Good  
**STRUCTURE**  
Occupied

**TRAFFIC VIEW**  
Road Facing Traffic  
**OWNER**  
ALAN S FRIEDKIN &  
CAROL J FRIEDKIN

## 3330 Market | S & S Food Equipment



**SURFACE MATERIAL**  
Brick, Wood  
**SURFACE CONDITION**  
Good  
**STRUCTURE**  
Vacant

**TRAFFIC VIEW**  
Northbound Traffic  
**OWNER**  
APRIL E APONTE

# 3224 Market | O'Connor's Sales & Service



**SURFACE MATERIAL**  
Brick, Sliding  
**SURFACE CONDITION**  
Good  
**STRUCTURE**  
Occupied

**TRAFFIC VIEW**  
Northbound Traffic  
**OWNER**  
DONALD J OCONNOR

# 3130 Market | MarketStreet Express



**SURFACE MATERIAL**  
Brick  
**SURFACE CONDITION**  
Good  
**STRUCTURE**  
Vacant

**TRAFFIC VIEW**  
Road Facing Traffic  
**OWNER**  
CJR PETROLEUM INC



# 3025 Market | Progress House



## **SURFACE MATERIAL**

Brick

## **SURFACE CONDITION**

Good

## **STRUCTURE**

Occupied

## **TRAFFIC VIEW**

Southbound Traffic

## **OWNER**

PROGRESS HOUSE LLC

# 2841 Market | Pizza N Gyro Place



## **SURFACE MATERIAL**

Brick

## **SURFACE CONDITION**

Good

## **STRUCTURE**

Occupied

## **TRAFFIC VIEW**

Road Facing Traffic

## **OWNER**

NOUREEN FATIMA

# 2829 Southern Blvd



**SURFACE MATERIAL**  
Concrete  
**SURFACE CONDITION**  
Good  
**STRUCTURE**  
Vacant, Underutilized

**TRAFFIC VIEW**  
Road Facing Traffic  
**OWNER**  
LOUISE COOPER &  
FRED COOPER

# 2801 Market | Mahoning Avenue Southside Annex



**SURFACE MATERIAL**  
Brick  
**SURFACE CONDITION**  
Good  
**STRUCTURE**  
Vacant

**TRAFFIC VIEW**  
Road Facing Traffic  
**OWNER**  
ABEL FAMILY LIMITED  
PARTNERSHIP

## 2733 Market | Eagle's Christian Preschool & Child Care



### **SURFACE MATERIAL**

Brick

### **SURFACE CONDITION**

Good

### **STRUCTURE**

Occupied

### **TRAFFIC VIEW**

Southbound Traffic

### **OWNER**

WARRIORS INC

## 2141 Market | Jubilee Urban Renewal



### **SURFACE MATERIAL**

Brick

### **SURFACE CONDITION**

Good

### **STRUCTURE**

Occupied, Underutilized

### **TRAFFIC VIEW**

Northbound Traffic

### **OWNER**

CHRISTIAN FELLOWSHIP TAB  
EXEMPT DTE WE1679 91



# 2203 Market



**SURFACE MATERIAL**  
Brick, Wood  
**SURFACE CONDITION**  
Good  
**STRUCTURE**  
Vacant, Underutilized

**TRAFFIC VIEW**  
Northbound and Road Facing Traffic  
**OWNER**  
WZZ LLC

# 2308 Market | Flambeau's Live



**SURFACE MATERIAL**  
Brick  
**SURFACE CONDITION**  
Good  
**STRUCTURE**  
Underutilized

**TRAFFIC VIEW**  
Northbound and Southbound Traffic  
**OWNER**  
AJM MANAGEMENT LLC

# 2301 Market | Estate Salvage & Hauling



**SURFACE MATERIAL**  
Brick  
**SURFACE CONDITION**  
Fair  
**STRUCTURE**  
Vacant

**TRAFFIC VIEW**  
Southbound and Road Facing Traffic  
**OWNER**  
CITY OF YOUNGSTOWN  
LAND REUTILIZATION PROGRAM

# 2400 Market | Potential Development Elementary & Middle School



**SURFACE MATERIAL**  
Brick  
**SURFACE CONDITION**  
Good  
**STRUCTURE**  
Occupied

**TRAFFIC VIEW**  
Northbound Traffic  
**OWNER**  
POTENTIAL DEVELOPMENT  
PROGRAM

# 2550 1/2 Market | ACE Cash Express



**SURFACE MATERIAL**  
Brick  
**SURFACE CONDITION**  
Good  
**STRUCTURE**  
Occupied

**TRAFFIC VIEW**  
Northbound Traffic  
**OWNER**  
CHAHINE GROUP LLC

# 2555 Market | K C Motor Co



**SURFACE MATERIAL**  
Brick, Concrete  
**SURFACE CONDITION**  
Good  
**STRUCTURE**  
Occupied



**TRAFFIC VIEW**  
Northbound and Road Facing Traffic  
**OWNER**  
MICHAEL J JR CALAUTTI



# 2000 Market | Lapping Arthur G DO



**SURFACE MATERIAL**  
Concrete  
**SURFACE CONDITION**  
Fair  
**STRUCTURE**  
Occupied

**TRAFFIC VIEW**  
Northbound Traffic  
**OWNER**  
AGL ENTERPRISES INC

# 1925 Market | B & N Auto Parts



**SURFACE MATERIAL**  
Brick  
**SURFACE CONDITION**  
Good  
**STRUCTURE**  
Underutilized

**TRAFFIC VIEW**  
Northbound and Southbound Traffic  
**OWNER**  
E C LAND ENTERPRISES

# 1919 Market | Sharp Auto Body



## **SURFACE MATERIAL**

Brick

## **SURFACE CONDITION**

Good

## **STRUCTURE**

Occupied

## **TRAFFIC VIEW**

Road Facing Traffic

## **OWNER**

EC LAND ENTERPRISES LTD

# 1771 Market | CCA



## **SURFACE MATERIAL**

Brick

## **SURFACE CONDITION**

Good

## **STRUCTURE**

Occupied

## **TRAFFIC VIEW**

Northbound Traffic

## **OWNER**

MAHONING COUNTY COMMUNITY  
CORRECTIONS ASSOCIATION

# 1725 Market



**SURFACE MATERIAL**  
Brick, Wood  
**SURFACE CONDITION**  
Good (NB), Fair (RF)  
**STRUCTURE**  
Vacant

**TRAFFIC VIEW**  
Northbound and Road Facing Traffic  
**OWNER**  
THE CARTER HOUSE

# 1719 Market



**SURFACE MATERIAL**  
Brick, Wood  
**SURFACE CONDITION**  
Good, Fair  
**STRUCTURE**  
Vacant

**TRAFFIC VIEW**  
Road Facing Traffic  
**OWNER**  
THE CARTER HOUSE



# 1714 Market | CCA



## **SURFACE MATERIAL**

Brick

## **SURFACE CONDITION**

Good

## **STRUCTURE**

Occupied

## **TRAFFIC VIEW**

Northbound and Southbound Traffic

## **OWNER**

MAHONING COUNTY COMMUNITY  
CORRECTIONS ASSOC INC

# 1707 Market | Sherwin Williams



## **SURFACE MATERIAL**

Brick

## **SURFACE CONDITION**

Good

## **STRUCTURE**

Occupied

## **TRAFFIC VIEW**

Road Facing Traffic

## **OWNER**

JCJH LLC

# 14 Kenmore



**SURFACE MATERIAL**

Brick

**SURFACE CONDITION**

Fair

**STRUCTURE**

Vacant, Underutilized

**TRAFFIC VIEW**

Road Facing Traffic

**OWNER**

MARSHALL FLEMING

# 1315 Market | Windows R Us Ohio



**SURFACE MATERIAL**

Brick, Tiles

**SURFACE CONDITION**

Good

**STRUCTURE**

Underutilized

**TRAFFIC VIEW**

Northbound and Road Facing

**OWNER**

MAHONING COUNTY COMMUNITY  
CORRECTIONS ASSOCIATION INC

# 1305 Market | J&W Crown Limousine and Coachline



## **SURFACE MATERIAL**

Brick

## **SURFACE CONDITION**

Good

## **STRUCTURE**

Occupied

## **TRAFFIC VIEW**

Road Facing Traffic

## **OWNER**

JESSE G HARDIN

# 18 Pyatt | Diamond Auto Body



## **SURFACE MATERIAL**

Brick

## **SURFACE CONDITION**

Good

## **STRUCTURE**

Vacant, Underutilized

## **TRAFFIC VIEW**

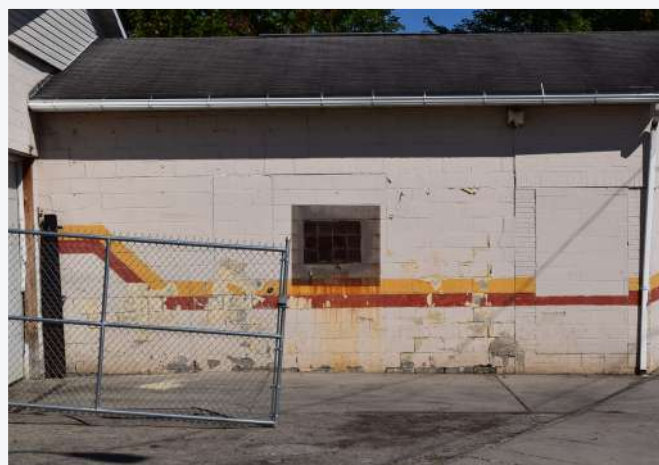
Road Facing

## **OWNER**

J E WASHINGTON FUNERAL



# 820 Market | Wash-On-Wheels Cleaning Services



**SURFACE MATERIAL**  
Brick  
**SURFACE CONDITION**  
Poor  
**STRUCTURE**  
Underutilized

**TRAFFIC VIEW**  
Northbound Traffic  
**OWNER**  
JOHN F & SANDY VICAREL

## 651 Market



**SURFACE MATERIAL**  
Brick, Wood  
**SURFACE CONDITION**  
Good  
**STRUCTURE**  
Occupied

**TRAFFIC VIEW**  
Road Facing  
**OWNER**  
R&A ZABEL REAL ESTATE LLC

# 1029 Market | Andre Silver's Cabinet Makers



**SURFACE MATERIAL**  
Brick  
**SURFACE CONDITION**  
Good  
**STRUCTURE**  
Occupied

**TRAFFIC VIEW**  
Southbound Traffic  
**OWNER**  
ANDRE A SILVERS

# 645 Market | Zabel's Restaurant Equipment and Supplies



**SURFACE MATERIAL**  
Metal  
**SURFACE CONDITION**  
Good  
**STRUCTURE**  
Occupied



**TRAFFIC VIEW**  
Northbound Traffic and Road Facing  
**OWNER**  
R&A ZABEL REAL ESTATE LLC

# 600 Market | ABC Hood Cleaning

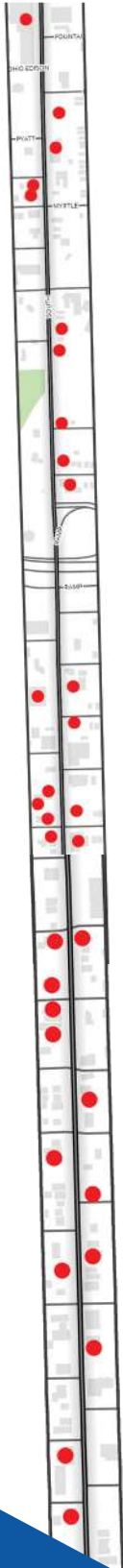


**SURFACE MATERIAL**  
Brick, Plaster  
**SURFACE CONDITION**  
Fair  
**STRUCTURE**  
Underutilized

**TRAFFIC VIEW**  
Road Facing Traffic  
**OWNER**  
SVJB LTD

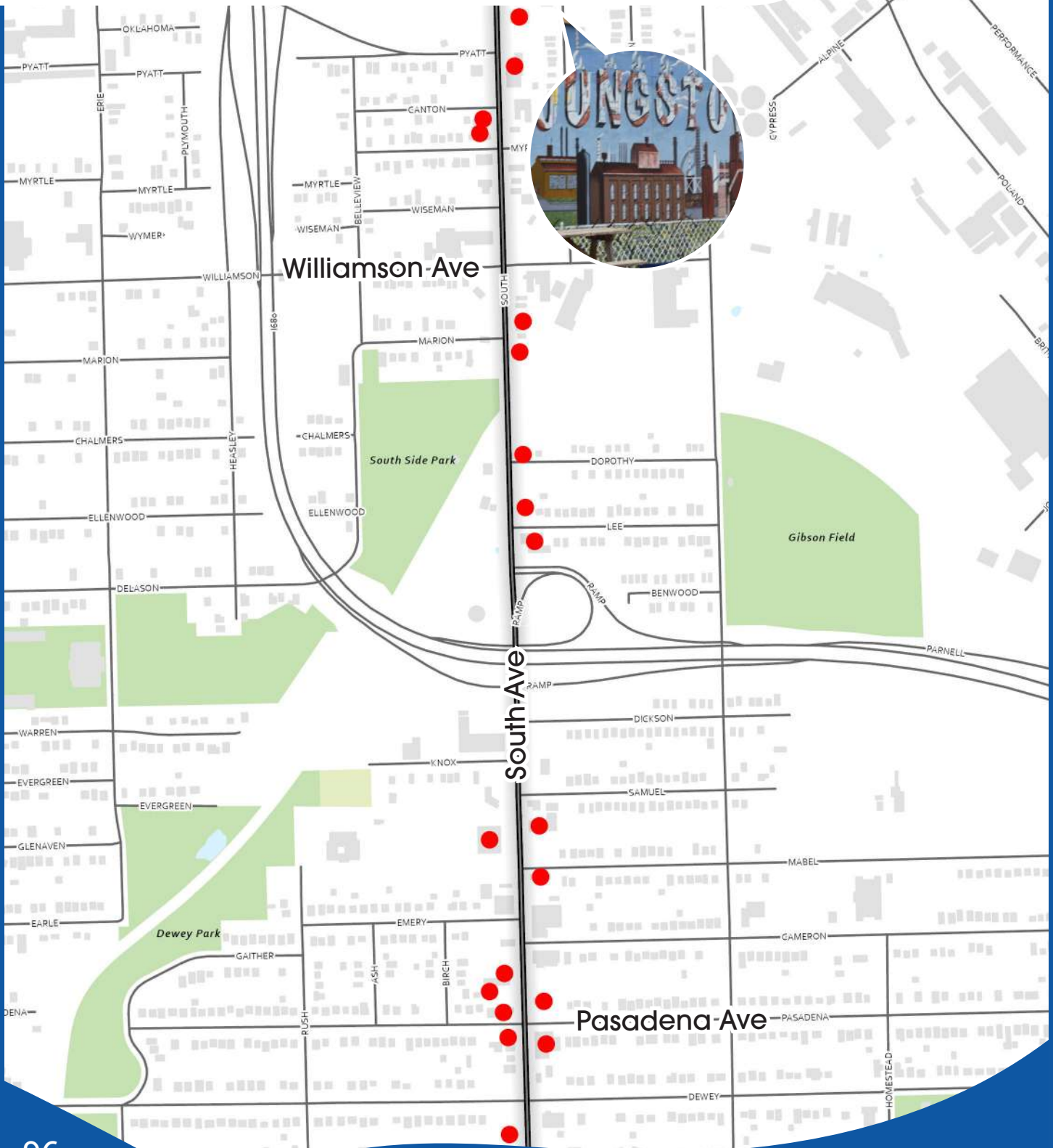


# South Avenue

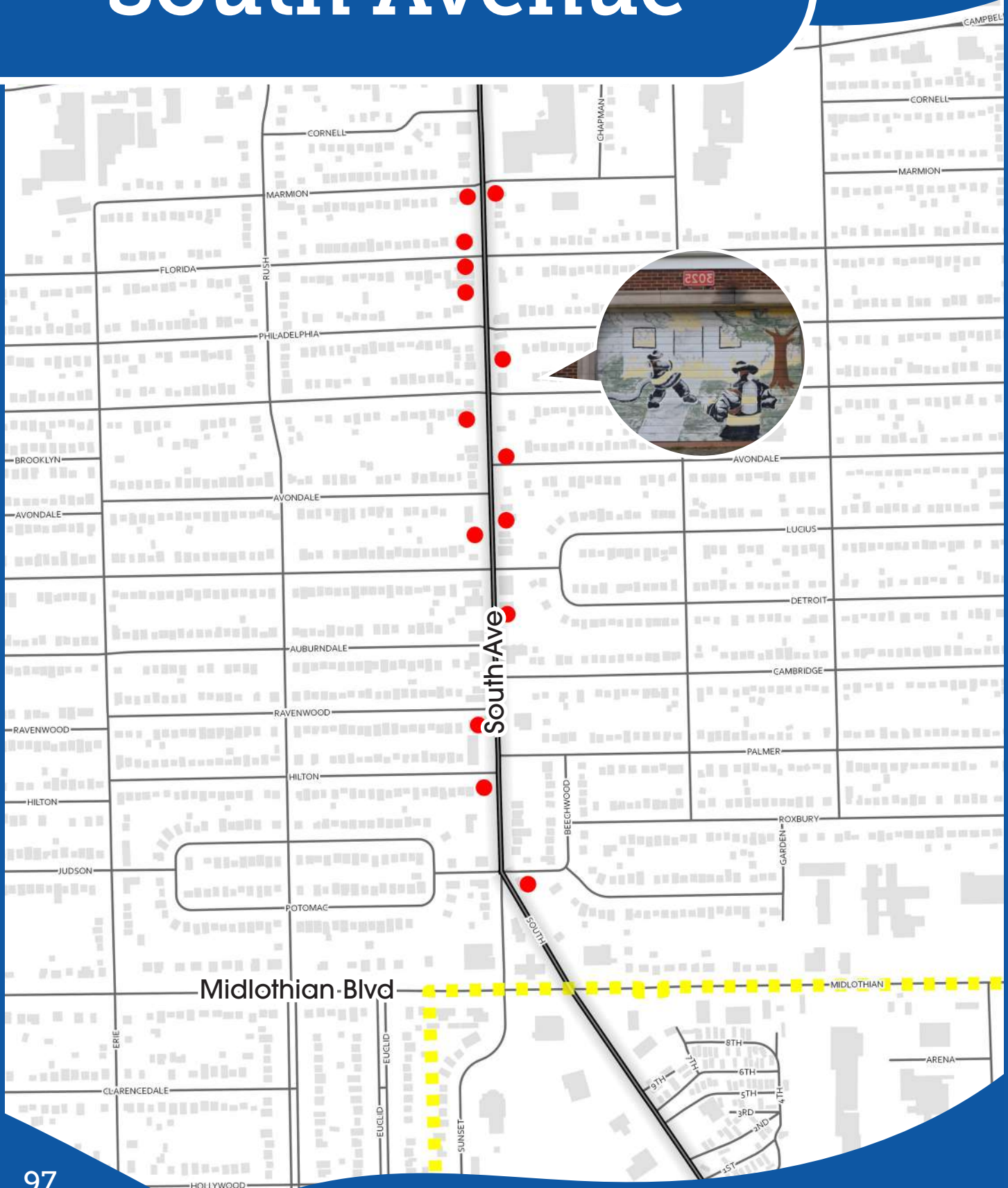


South Avenue is a commercial corridor on the south side of Youngstown that transitions to areas of residential neighborhoods farther south of Downtown. This corridor houses many larger garage-like buildings that have great opportunities for art. There are currently less than 5 locations that have public art on them. These locations are a mix of specific business advertising through painted logos and murals highlighting the industrial history of the city. These art pieces provide a great foundation to add more art to the area.

# South Avenue



# South Avenue





# Existing South Art

833 South



833 South



1204 South



1204 South



1204 South



2228 South



3025 South



3621 South



# 1014 South



**SURFACE MATERIAL**  
Brick, Wood  
**SURFACE CONDITION**  
Good  
**STRUCTURE**  
Vacant, Underutilized

**TRAFFIC VIEW**  
Northbound and Road Facing Traffic  
**OWNER**  
GEC77 LLC

# 1000 & 1004 South

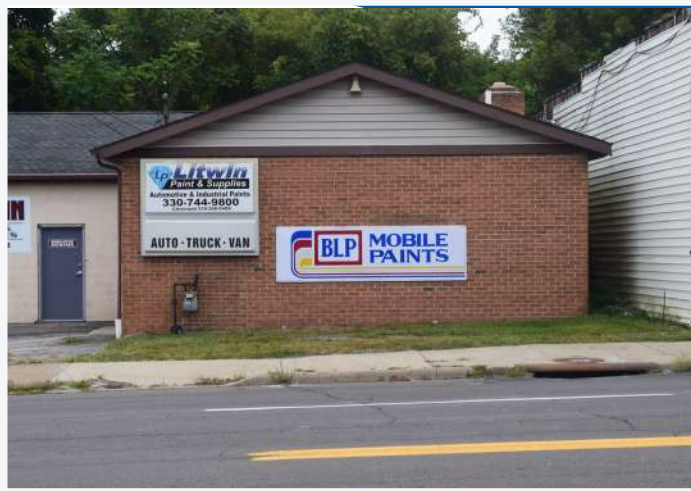


**SURFACE MATERIAL**  
Brick  
**SURFACE CONDITION**  
Good  
**STRUCTURE**  
Underutilized

**TRAFFIC VIEW**  
Northbound, Southbound, and Road Facing Traffic  
**OWNER**  
PAUL SANCHEZ



# 845 South | Litwin Paint & Supplies



**SURFACE MATERIAL**  
Brick  
**SURFACE CONDITION**  
Good  
**STRUCTURE**  
Occupied

**TRAFFIC VIEW**  
Road Facing Traffic  
**OWNER**  
LITWIN REAL ESTATE LLC

# 833 South | Solid Platforms, Inc



**SURFACE MATERIAL**  
Stucco  
**SURFACE CONDITION**  
Good  
**STRUCTURE**  
Occupied

**TRAFFIC VIEW**  
Road Facing Traffic  
**OWNER**  
SOLID PLATFORMS INC



# 730 South | Ohio Edison



**SURFACE MATERIAL**  
Brick  
**SURFACE CONDITION**  
Good  
**STRUCTURE**  
Occupied

**TRAFFIC VIEW**  
Road Facing Traffic  
**OWNER**  
OHIO EDISON CO.

# 1323 South | Thirteen Twenty-Three Club Inc



**SURFACE MATERIAL**  
Brick  
**SURFACE CONDITION**  
Fair  
**STRUCTURE**  
Occupied, Underutilized

**TRAFFIC VIEW**  
Northbound and Southbound Traffic  
**OWNER**  
1323 CLUB

# 1339 South | Angelo's Barber Shop



**SURFACE MATERIAL**  
Brick  
**SURFACE CONDITION**  
Good  
**STRUCTURE**  
Occupied

**TRAFFIC VIEW**  
Northbound and Southbound Traffic  
**OWNER**  
ANGELO MANUEL SOLIS

# 1447 South



**SURFACE MATERIAL**  
Metal  
**SURFACE CONDITION**  
Good  
**STRUCTURE**  
Occupied

**TRAFFIC VIEW**  
Southbound Traffic  
**OWNER**  
BRIAN M KENNEDY

# 1475 South | Transman Manufacturing



**SURFACE MATERIAL**  
Brick  
**SURFACE CONDITION**  
Good  
**STRUCTURE**  
Occupied

**TRAFFIC VIEW**  
Northbound and Road Facing Traffic  
**OWNER**  
TRANSMAN REMANUFACTURING  
LLC

# 1481 South | Sid Mar Foods Inc



**SURFACE MATERIAL**  
Brick  
**SURFACE CONDITION**  
Good  
**STRUCTURE**  
Occupied

**TRAFFIC VIEW**  
Northbound Traffic  
**OWNER**  
MARCIANO & SEIDLER



# 2402 South | Petra Food Mart



**SURFACE MATERIAL**  
Brick  
**SURFACE CONDITION**  
Good  
**STRUCTURE**  
Vacant, Underutilized

**TRAFFIC VIEW**  
Road Facing Traffic  
**OWNER**  
FAISAL ALHAMID

# 2303 South | Rusco Products Inc



**SURFACE MATERIAL**  
Brick  
**SURFACE CONDITION**  
Good  
**STRUCTURE**  
Occupied

**TRAFFIC VIEW**  
Southbound and Road Facing Traffic  
**OWNER**  
RUSCO PRODUCTS INC

# 2302 South | Patsy's



**SURFACE MATERIAL**  
Stucco, Wood  
**SURFACE CONDITION**  
Good  
**STRUCTURE**  
Underutilized

**TRAFFIC VIEW**  
Road Facing Traffic  
**OWNER**  
BOBBY JEFFERSON

# 2221 South



**SURFACE MATERIAL**  
Brick, Wood  
**SURFACE CONDITION**  
Good, Fair  
**STRUCTURE**  
Occupied

**TRAFFIC VIEW**  
Northbound, Southbound, and Road  
Facing Traffic  
**OWNER**  
SHAQUILLE MCELROY

# 2228 South | Cadman's LLC Appliance Sales



**SURFACE MATERIAL**  
Brick  
**SURFACE CONDITION**  
Good  
**STRUCTURE**  
Occupied

**TRAFFIC VIEW**  
Southbound Traffic  
**OWNER**  
CHAVAS HOME IMPROVEMENT LLC

# 2210 South | Miss Daisy's Place



**SURFACE MATERIAL**  
Brick  
**SURFACE CONDITION**  
Good  
**STRUCTURE**  
Occupied

**TRAFFIC VIEW**  
Northbound and Southbound Traffic  
**OWNER**  
CABRERA CORREA &  
RODOLFO CLAUDIO



# 2112 South | Valley Awning & Tent



**SURFACE MATERIAL**  
Brick  
**SURFACE CONDITION**  
Good  
**STRUCTURE**  
Occupied

**TRAFFIC VIEW**  
Northbound, Southbound, and Road  
Facing Traffic  
**OWNER**  
VALLEY AWNING & TENT INC

## 2026 South



**SURFACE MATERIAL**  
Brick  
**SURFACE CONDITION**  
Good  
**STRUCTURE**  
Vacant, Underutilized

**TRAFFIC VIEW**  
Road Facing Traffic  
**OWNER**  
MAHONING VALLEY COMMUNITY  
SCHOOL

# 2007 South | Western Reserve IEC Chapter



**SURFACE MATERIAL**  
Brick  
**SURFACE CONDITION**  
Fair  
**STRUCTURE**  
Occupied



**TRAFFIC VIEW**  
Northbound and Southbound Traffic  
**OWNER**  
INDEPENDENT ELECTRICAL CON-  
TRACTORS

# 2105 South | The Local Celebrity Bar & Grill



**SURFACE MATERIAL**  
Brick  
**SURFACE CONDITION**  
Fair  
**STRUCTURE**  
Occupied



**TRAFFIC VIEW**  
Northbound and Southbound Traffic  
**OWNER**  
LENNELL LAND CORP



# 2803 South | A Plus Building Maintenance



**SURFACE MATERIAL**  
Brick, Wood  
**SURFACE CONDITION**  
Good  
**STRUCTURE**  
Vacant



**TRAFFIC VIEW**  
Southbound and Road Facing Traffic  
**OWNER**  
DONALD F JR DEMPSEY

# 2800 South | Savo's Bar and Grill



**SURFACE MATERIAL**  
Brick, Wood  
**SURFACE CONDITION**  
Good  
**STRUCTURE**  
Vacant



**TRAFFIC VIEW**  
Southbound and Road Facing Traffic  
**OWNER**  
GINA MELFI



# 2828 South | D & G Auto



**SURFACE MATERIAL**  
Brick  
**SURFACE CONDITION**  
Good  
**STRUCTURE**  
Occupied

**TRAFFIC VIEW**  
Northbound, Southbound, and Road  
Facing Traffic  
**OWNER**  
CHAUDHRY MUNAWAR

# 2904 South | Allied Locksmiths of Youngstown



**SURFACE MATERIAL**  
Brick  
**SURFACE CONDITION**  
Good  
**STRUCTURE**  
Occupied

**TRAFFIC VIEW**  
Southbound Traffic  
**OWNER**  
GLADYS MARIE RAMMUNDO ET AL

# 2914 South



**SURFACE MATERIAL**  
Metal, Brick  
**SURFACE CONDITION**  
Good  
**STRUCTURE**  
Vacant

**TRAFFIC VIEW**  
Northbound and Road Facing Traffic  
**OWNER**  
JOESEPH W ALLEN

# 3011 South | Teenie's Tavern



**SURFACE MATERIAL**  
Brick  
**SURFACE CONDITION**  
Good  
**STRUCTURE**  
Occupied

**TRAFFIC VIEW**  
Southbound Traffic  
**OWNER**  
BRIANNA GORDULIC

## 3114 South | OG Club



**SURFACE MATERIAL**  
Brick  
**SURFACE CONDITION**  
Good  
**STRUCTURE**  
Occupied

**TRAFFIC VIEW**  
Northbound Traffic  
**OWNER**  
OG CLUB LLC

## 3131 South | Step It Up Cuts



**SURFACE MATERIAL**  
Brick  
**SURFACE CONDITION**  
Good  
**STRUCTURE**  
Occupied

**TRAFFIC VIEW**  
Northbound Traffic  
**OWNER**  
MARION R GRIFFIN &  
AARON A GRIFFIN



# 3228 South | Fly & Rich Printing Company



**SURFACE MATERIAL**  
Brick  
**SURFACE CONDITION**  
Fair  
**STRUCTURE**  
Vacant

**TRAFFIC VIEW**  
Southbound Traffic  
**OWNER**  
RICHARD F GULA

## 3213 South



**SURFACE MATERIAL**  
Brick  
**SURFACE CONDITION**  
Fair  
**STRUCTURE**  
Vacant

**TRAFFIC VIEW**  
Southbound Traffic  
**OWNER**  
MOHAMMED Z ALRUHEIM

# 3323 South | Pastime Tavern



**SURFACE MATERIAL**  
Brick  
**SURFACE CONDITION**  
Fair  
**STRUCTURE**  
Occupied

**TRAFFIC VIEW**  
Northbound Traffic  
**OWNER**  
MICHAEL RUOZZO

# 3501 South



**SURFACE MATERIAL**  
Concrete  
**SURFACE CONDITION**  
Fair  
**STRUCTURE**  
Vacant, Underutilized

**TRAFFIC VIEW**  
Road Facing Traffic  
**OWNER**  
CITY OF YOUNGSTOWN LAND

# 3602 South | Irish Bob's Pub



**SURFACE MATERIAL**  
Brick  
**SURFACE CONDITION**  
Good  
**STRUCTURE**  
Occupied

**TRAFFIC VIEW**  
Southbound Traffic  
**OWNER**  
IRISH BOBBS INC

# 3703 South | The Corner Shop

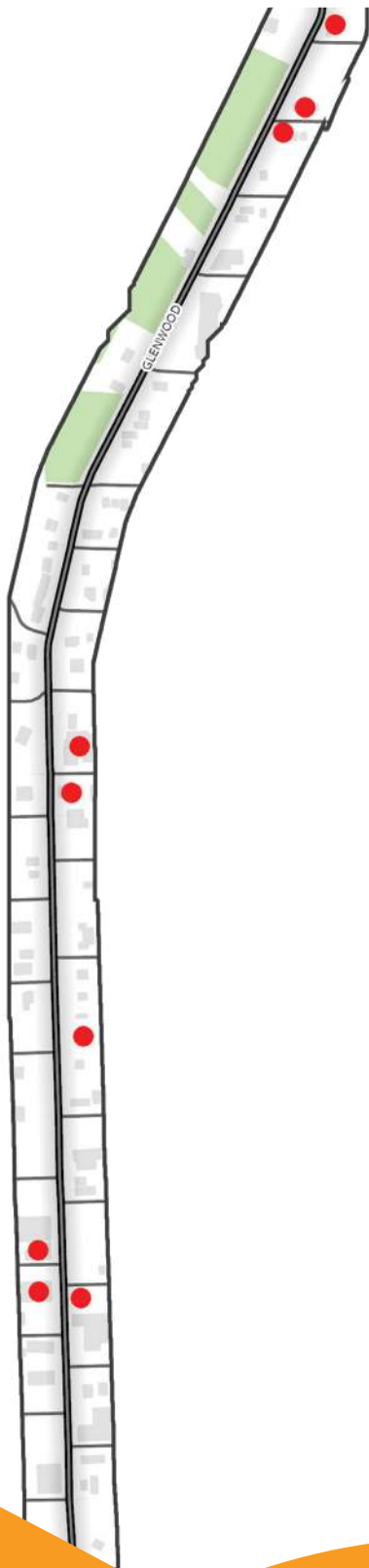


**SURFACE MATERIAL**  
Brick  
**SURFACE CONDITION**  
Good  
**STRUCTURE**  
Occupied

**TRAFFIC VIEW**  
Southbound Traffic  
**OWNER**  
RAMSEY ESMail & HILLAL ESMail



# Glenwood Avenue



Glenwood Ave is densely residential with some stretches of commercial buildings located on the west side. Most of the buildings are stand-alone and are larger in length rather than height. This corridor is home to the number of coffee shops and restaurants and is known as the “Gateway to Mill Creek Park”. The public art in the area highlights messages of growth, revitalization, and anti-violence. There are also murals that highlight the area’s history as the home of Idora Park. The development of this art can be attributed to the work of the YNDC and the passion for the arts in the corridor highlighted by locations like the Youngstown Playhouse and the murals on their buildings.

# Glenwood Avenue



# Existing Glenwood Art

2607 Glenwood Ave



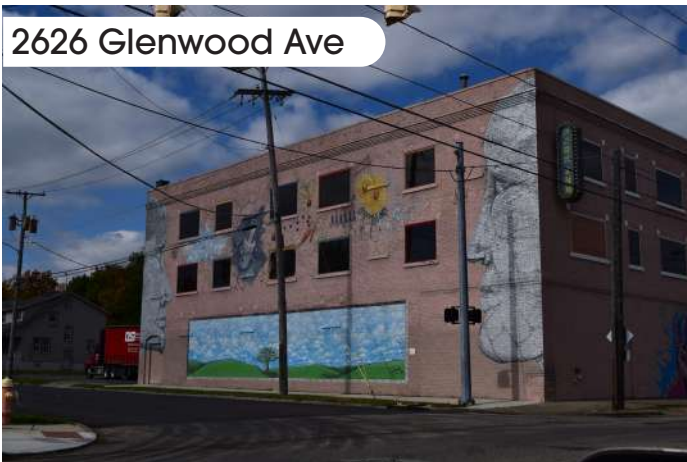
2622 Glenwood Ave



2626 Glenwood Ave



2626 Glenwood Ave



2747 Glenwood Ave





# 1133 Glenwood



**SURFACE MATERIAL**  
Brick  
**SURFACE CONDITION**  
Good  
**STRUCTURE**  
Occupied

**TRAFFIC VIEW**  
Northbound and Road Facing Traffic  
**OWNER**  
YOUNGSTOWN NEIGHBORHOOD  
DEVELOPMENT CORPORATION

# 1227 Glenwood | Diamond's Oxygen & Acetylene



**SURFACE MATERIAL**  
Brick  
**SURFACE CONDITION**  
Good  
**STRUCTURE**  
Occupied

**TRAFFIC VIEW**  
Southbound Traffic  
**OWNER**  
MICHAEL PERANKOVICH

# 1403 Glenwood



**SURFACE MATERIAL**  
Brick  
**SURFACE CONDITION**  
Fair  
**STRUCTURE**  
Vacant

**TRAFFIC VIEW**  
Southbound Traffic  
**OWNER**  
CITY OF YOUNGSTOWN LAND  
REUTILIZATION PROGRAM

# 2414 Glenwood



**SURFACE MATERIAL**  
Brick  
**SURFACE CONDITION**  
Fair  
**STRUCTURE**  
Underutilized



**TRAFFIC VIEW**  
Northbound Traffic  
**OWNER**  
CHARLES E RHODES

# 1945 Glenwood | Youngstown Playhouse & Youth Theatre



**SURFACE MATERIAL**  
Brick  
**SURFACE CONDITION**  
Good  
**STRUCTURE**  
Occupied

**TRAFFIC VIEW**  
Southbound Traffic  
**OWNER**  
YOUNGSTOWN NEIGHBORHOOD  
DEVELOPMENT CORPORATION

# 2504 Glenwood | Foster Art Theater



**SURFACE MATERIAL**  
Brick  
**SURFACE CONDITION**  
Good  
**STRUCTURE**  
Underutilized

**TRAFFIC VIEW**  
Road Facing Traffic  
**OWNER**  
YOUNGSTOWN NEIGHBORHOOD  
DEVELOPMENT CORPORATION



# 2501 Glenwood



**SURFACE MATERIAL**  
Brick  
**SURFACE CONDITION**  
Good  
**STRUCTURE**  
Vacant, Underutilized

**TRAFFIC VIEW**  
Northbound and Southbound Traffic  
**OWNER**  
CLEVON & ARNITA DUKES

# 2333 Glenwood



**SURFACE MATERIAL**  
Stucco  
**SURFACE CONDITION**  
Good  
**STRUCTURE**  
Occupied

**TRAFFIC VIEW**  
Northbound Traffic  
**OWNER**  
YOUNGSTOWN NEIGHBORHOOD  
DEVELOPMENT CORPORATION

# Existing Glenwood Art

701 Canfield Road



1712 Glenwood Ave



1945 Glenwood Ave



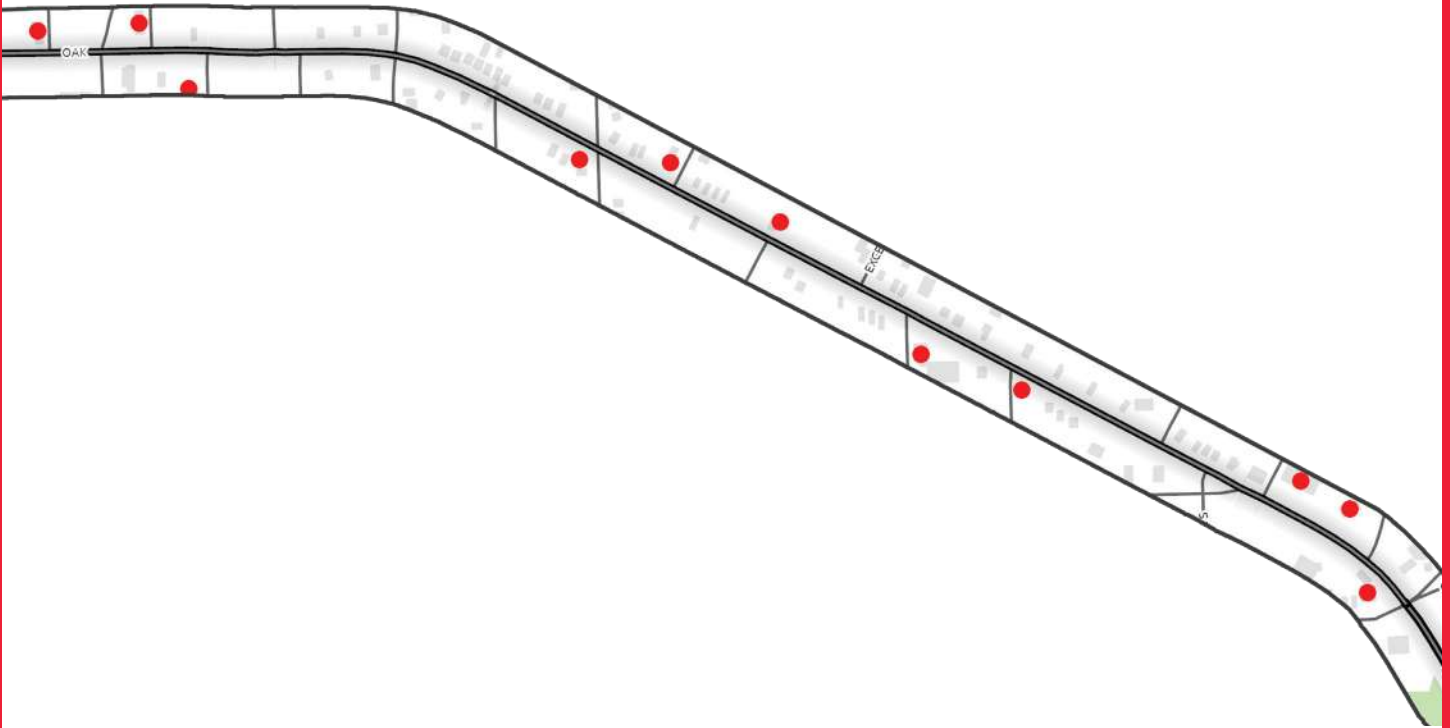
2531 Glenwood Ave



2607 Glenwood Ave



# Oak/McCartney Road



Oak/McCartney is densely residential with some commercial blocks located on the east side. The buildings are mostly store front style and stand-alone including restaurants and bars. There are no recent murals in the area so there are plenty of buildings that are opportunity sites. An iconic older mural is located on the Royal Oaks bar and could be considered as a great opportunity sight to expand and honor the older art work there.



# Oak/McCartney Road



# Oak/McCartney Road



# 924 Oak | Royal Oaks Bar and Grill



**SURFACE MATERIAL**  
Brick  
**SURFACE CONDITION**  
Good  
**STRUCTURE**  
Occupied

**TRAFFIC VIEW**  
Westbound Traffic  
**OWNER**  
KENNEDY JOHN &  
KENNEDY LOUIS

# 1029/1032 Oak



**SURFACE MATERIAL**  
Brick  
**SURFACE CONDITION**  
Good  
**STRUCTURE**  
Occupied

**TRAFFIC VIEW**  
Road Facing Traffic  
**OWNER**  
ANGEL RIVERA



# 1010 Oak | 1010 Quick Stop



**SURFACE MATERIAL**  
Brick  
**SURFACE CONDITION**  
Good  
**STRUCTURE**  
Occupied

**TRAFFIC VIEW**  
Westbound and Road Facing Traffic  
**OWNER**  
RAJVINDER KAUR

# 1357 Oak



**SURFACE MATERIAL**  
Wood  
**SURFACE CONDITION**  
Fair  
**STRUCTURE**  
Vacant

**TRAFFIC VIEW**  
Eastbound Traffic  
**OWNER**  
CITY OF YOUNGSTOWN

# 1398 Oak



**SURFACE MATERIAL**  
Brick  
**SURFACE CONDITION**  
Fair  
**STRUCTURE**  
Vacant

**TRAFFIC VIEW**  
Westbound and Eastbound Traffic  
**OWNER**  
DAMIEN ZVARA

# 1530 Oak



**SURFACE MATERIAL**  
Metal, Siding  
**SURFACE CONDITION**  
Good  
**STRUCTURE**  
Vacant

**TRAFFIC VIEW**  
Eastbound and Road Facing Traffic  
**OWNER**  
TOM TAMBURINO

# 1567 Oak | Otero Automotive



**SURFACE MATERIAL**  
Brick  
**SURFACE CONDITION**  
Fair  
**STRUCTURE**  
Occupied

**TRAFFIC VIEW**  
Road Facing Traffic  
**OWNER**  
APRIL E APONTE

# 1601 Oak



**SURFACE MATERIAL**  
Brick  
**SURFACE CONDITION**  
Good, Fair  
**STRUCTURE**  
Vacant

**TRAFFIC VIEW**  
Westbound and Eastbound Traffic  
**OWNER**  
JOHN P SANTANA



# 1804 Oak | Oak Street Market



**SURFACE MATERIAL**  
Brick  
**SURFACE CONDITION**  
Good  
**STRUCTURE**  
Vacant

**TRAFFIC VIEW**  
Road Facing Traffic  
**OWNER**  
PRABHJI LLC

# 1852 Oak | The Take Out



**SURFACE MATERIAL**  
Metal  
**SURFACE CONDITION**  
Good  
**STRUCTURE**  
Occupied

**TRAFFIC VIEW**  
Road Facing Traffic  
**OWNER**  
ANTONIO R OWENS JR

# 1851 Oak | Bienvenido Drive Thru



**SURFACE MATERIAL**  
Brick  
**SURFACE CONDITION**  
Good  
**STRUCTURE**  
Occupied

**TRAFFIC VIEW**  
Road Facing Traffic  
**OWNER**  
HASSAN A HASAN

# 1900 McCartney | Nasco Roofing & Construction



**SURFACE MATERIAL**  
Concrete  
**SURFACE CONDITION**  
Good  
**STRUCTURE**  
Occupied

**TRAFFIC VIEW**  
Westbound Traffic  
**OWNER**  
LINDA NASSERI

# 1912 McCartney | Tienda Guatelinda



**SURFACE MATERIAL**  
Brick  
**SURFACE CONDITION**  
Fair  
**STRUCTURE**  
Occupied

**TRAFFIC VIEW**  
Eastbound Traffic  
**OWNER**  
YO DEVELOPMENT CO

# 1992 McCartney | A Taste of Seafood and More



**SURFACE MATERIAL**  
Brick  
**SURFACE CONDITION**  
Good  
**STRUCTURE**  
Vacant, Underutilized

**TRAFFIC VIEW**  
Eastbound Traffic  
**OWNER**  
CHARLES A GRIFFITH SR



# 2000 McCartney | 422 Auto Mall



**SURFACE MATERIAL**  
Metal  
**SURFACE CONDITION**  
Good  
**STRUCTURE**  
Vacant, Underutilized

**TRAFFIC VIEW**  
Eastbound and Road Facing Traffic  
**OWNER**  
NASER MUSLEH & SHEILA MUSLEH

# McGuffey Road

McGuffey is a densely residential corridor with some commercial locations throughout. Many of the buildings are stand-alone store fronts including service providers like barbers and car washes. There are a few larger multistory buildings that were indicated as opportunity sites as well. McGuffey currently has little to no public art on its corridor, so this is a great space to bring the joy of public art into.

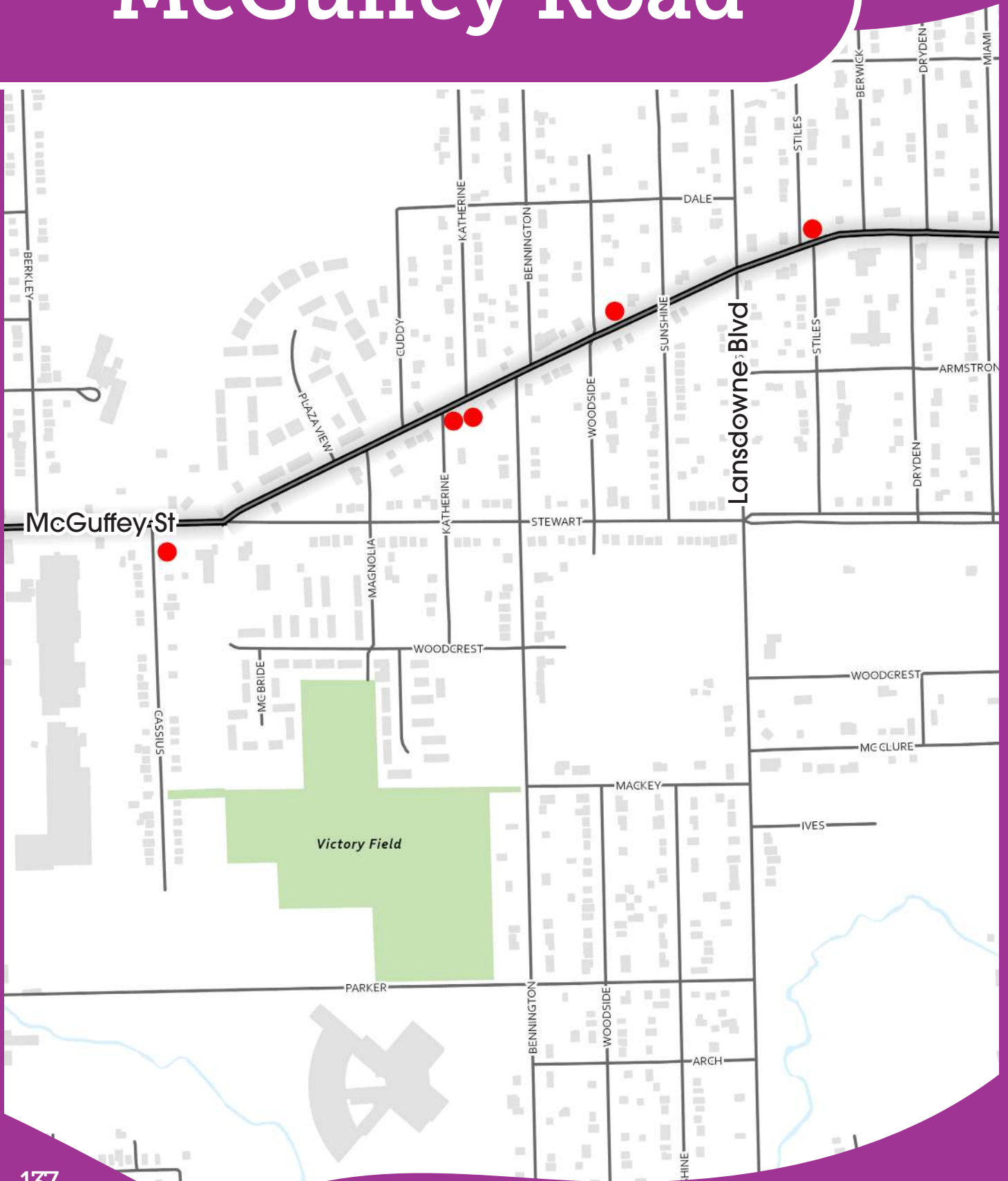


# McGuffey Road





# McGuffey Road



# 900 Albert



**SURFACE MATERIAL**  
Metal  
**SURFACE CONDITION**  
Fair  
**STRUCTURE**  
Underutilized

**TRAFFIC VIEW**  
Road Facing Traffic  
**OWNER**  
IRON CITY INDUSTRIAL PARK LLC

# 1306 McGuffey | New Vision



**SURFACE MATERIAL**  
Brick, Concrete  
**SURFACE CONDITION**  
Good  
**STRUCTURE**  
Occupied



**TRAFFIC VIEW**  
Westbound Traffic  
**OWNER**  
PATRICK D MCWHORTER ET AL

# 1402 McGuffey | Chucks Car Wash



**SURFACE MATERIAL**  
Brick  
**SURFACE CONDITION**  
Good  
**STRUCTURE**  
Underutilized

**TRAFFIC VIEW**  
Road Facing Traffic  
**OWNER**  
GLENN E SHELTON

# 1601 McGuffey [1]



**SURFACE MATERIAL**  
Brick  
**SURFACE CONDITION**  
Good  
**STRUCTURE**  
Occupied

**TRAFFIC VIEW**  
Westbound Traffic  
**OWNER**  
LUELLA WARE GDN



# 1601 McGuffey [2]



**SURFACE MATERIAL**  
Wood  
**SURFACE CONDITION**  
Poor  
**STRUCTURE**  
Vacant

**TRAFFIC VIEW**  
Eastbound Traffic  
**OWNER**  
LUELLA WARE GDN

# 1702 McGuffey | Gentleman Quarters Barber Shop



**SURFACE MATERIAL**  
Brick  
**SURFACE CONDITION**  
Good  
**STRUCTURE**  
Occupied

**TRAFFIC VIEW**  
Eastbound Traffic  
**OWNER**  
DAWN POWELL

# 1936 McGuffey



**SURFACE MATERIAL**  
Brick  
**SURFACE CONDITION**  
Fair  
**STRUCTURE**  
Vacant

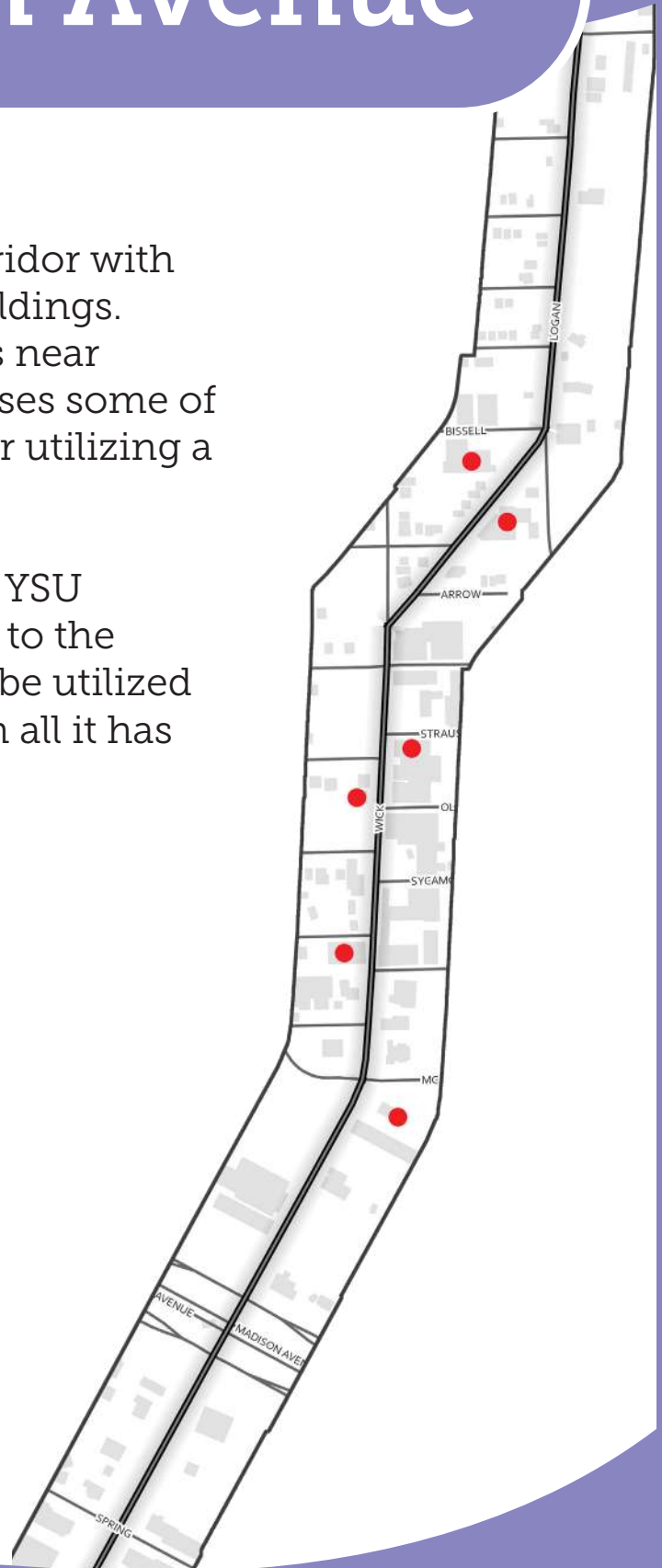


**TRAFFIC VIEW**  
Eastbound and Road Facing Traffic  
**OWNER**  
RASHON BRITT

# Wick/Logan Avenue

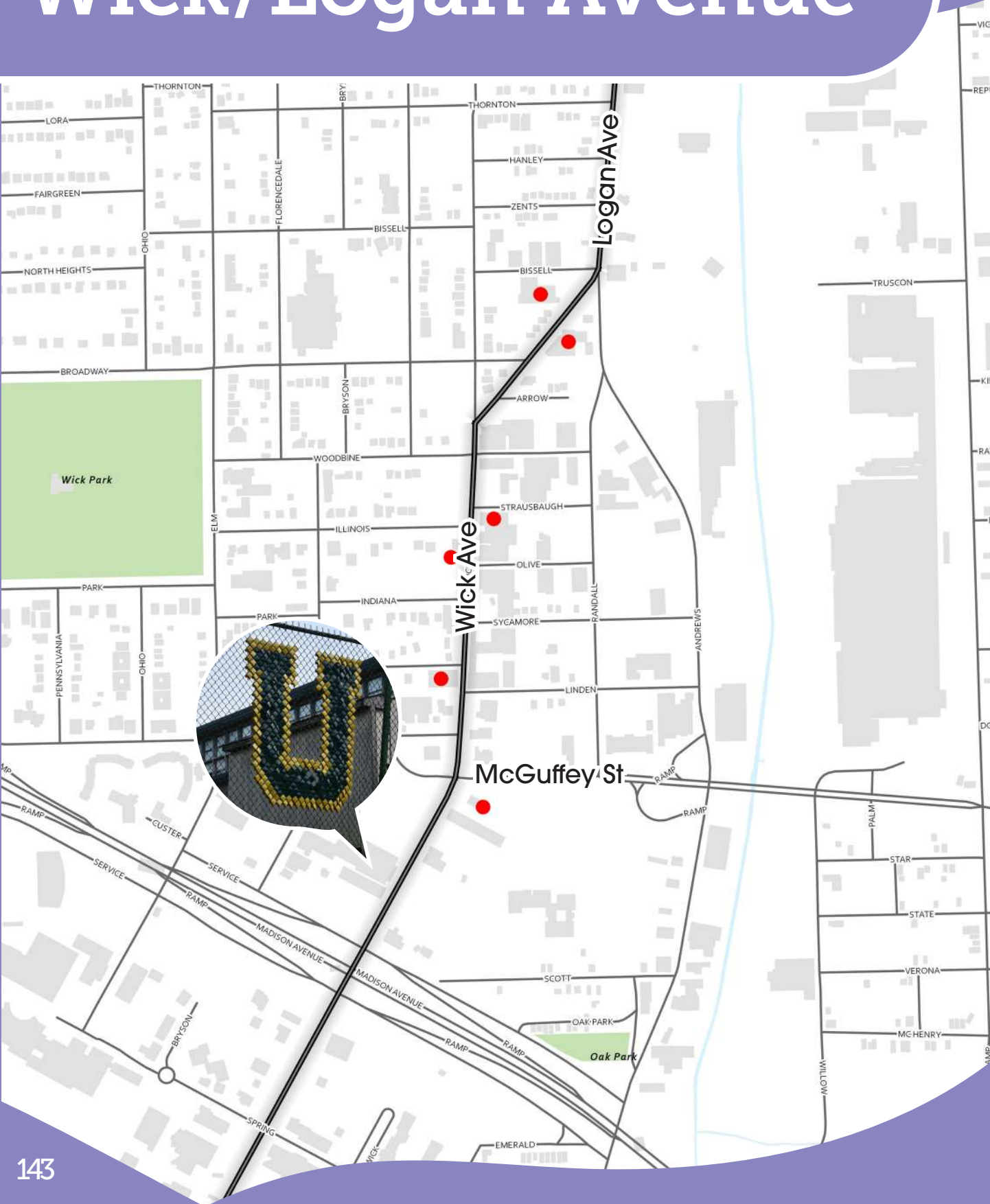
Wick/Logan is a commercial corridor with larger factory and garage like buildings. Wick has some restaurants and is near Ursuline High School which houses some of the only public art on the corridor utilizing a unique medium of fence art.

This corridor is near the bustling YSU campus and one of the gateways to the downtown area. Public art could be utilized in this corridor to shine a light on all it has to offer.





# Wick/Logan Avenue



# Existing Wick-Logan Art

750 Wick Ave





# 789 Wick | Belleria



**SURFACE MATERIAL**  
Brick  
**SURFACE CONDITION**  
Good  
**STRUCTURE**  
Occupied

**TRAFFIC VIEW**  
Northbound and Southbound Traffic  
**OWNER**  
MICHAEL LIBERATO

# 850 Wick | Automotive Dynamics Inc



**SURFACE MATERIAL**  
Brick, Wood  
**SURFACE CONDITION**  
Fair  
**STRUCTURE**  
Occupied

**TRAFFIC VIEW**  
Northbound and Road Facing Traffic  
**OWNER**  
DOB WICK AVE PROPERTIES



# 1034 Wick | Wick Automotive Supply Inc



**SURFACE MATERIAL**  
Brick  
**SURFACE CONDITION**  
Good  
**STRUCTURE**  
Vacant

**TRAFFIC VIEW**  
Northbound Traffic  
**OWNER**  
MAHONING COUNTY LAND  
REUTILIZATION CORPORATION

## 1097 Wick



**SURFACE MATERIAL**  
Brick, Wood  
**SURFACE CONDITION**  
Poor  
**STRUCTURE**  
Vacant

**TRAFFIC VIEW**  
Northbound Traffic  
**OWNER**  
MARY FAWCETT &  
RENA FRANGIAS

# 1309 Logan



**SURFACE MATERIAL**  
Brick, Wood  
**SURFACE CONDITION**  
Poor  
**STRUCTURE**  
Vacant

**TRAFFIC VIEW**  
Road Facing Traffic  
**OWNER**  
NOVE MESTO LLC

# 31 Bissell | Acme Steak & Seafood

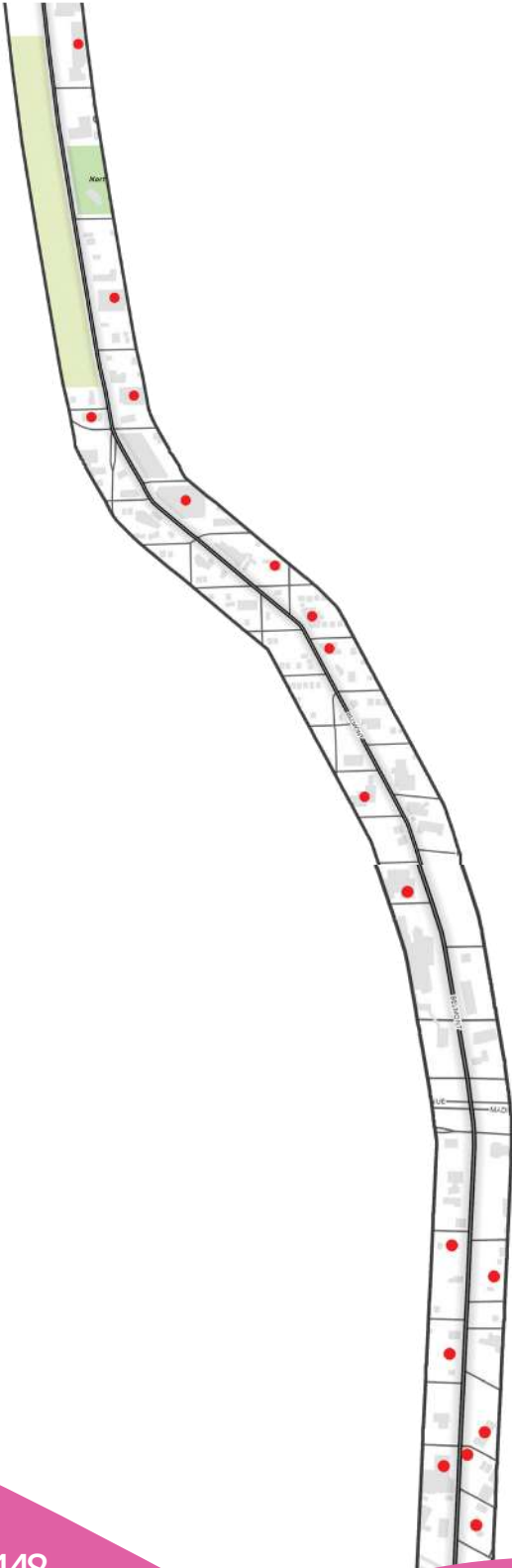


**SURFACE MATERIAL**  
Brick  
**SURFACE CONDITION**  
Good  
**STRUCTURE**  
Occupied



**TRAFFIC VIEW**  
Northbound and Road Facing Traffic  
**OWNER**  
MICHAEL A III MIKE

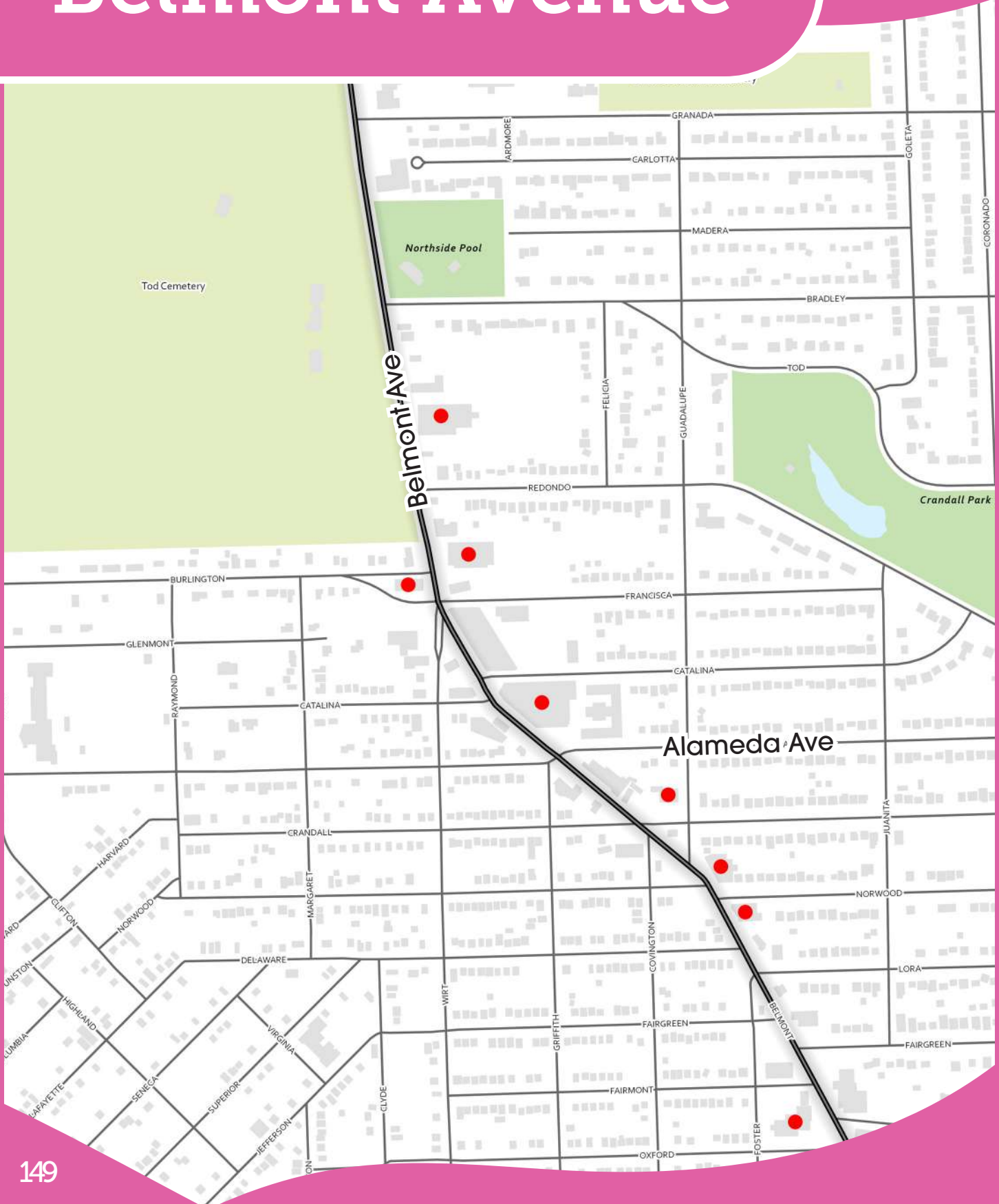
# Belmont Avenue



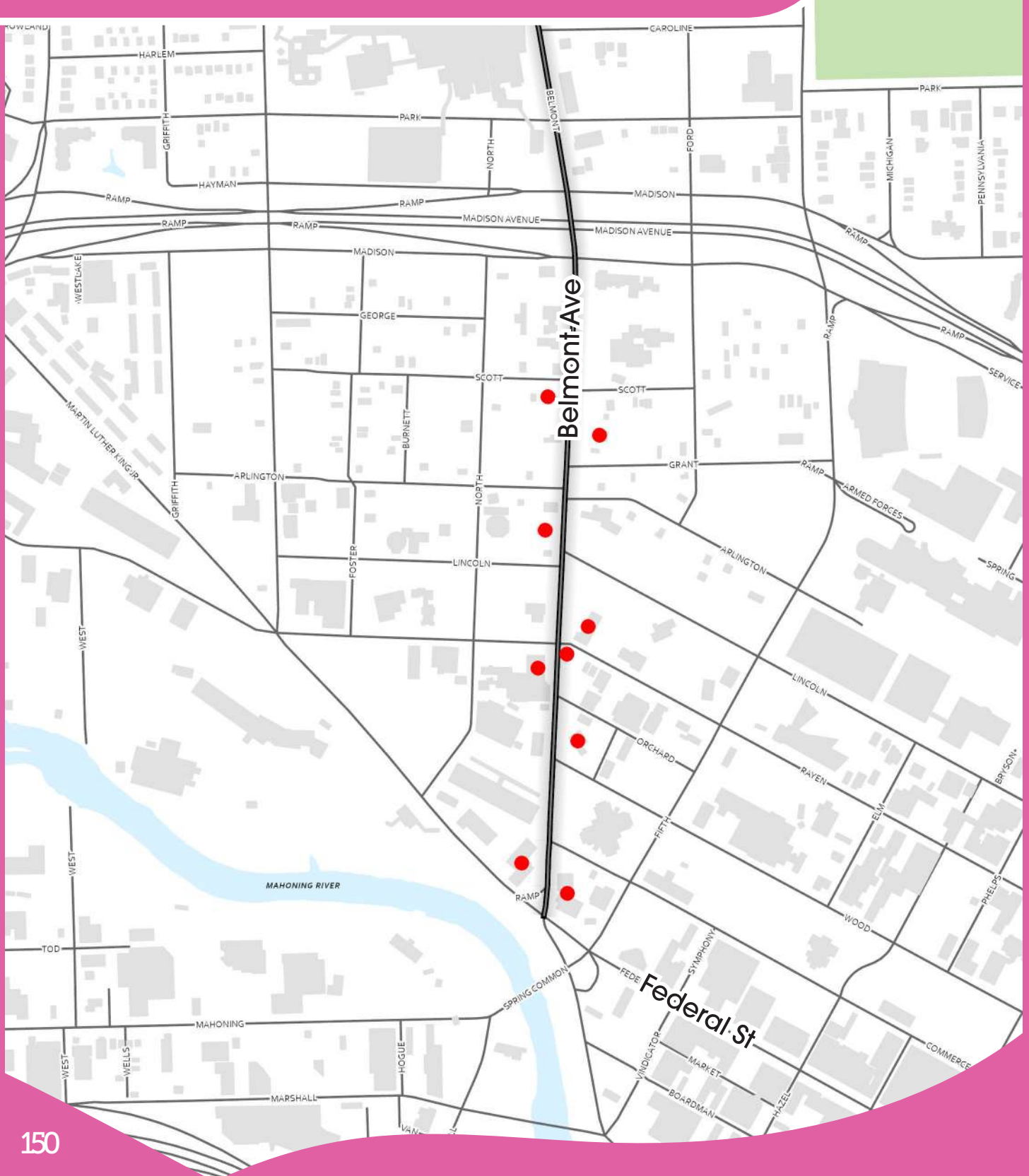
Belmont is a commercial corridor with stand-alone storefronts and larger multistory warehouse like buildings located on the north side. These buildings have long side walls that are great for a possible public art opportunity. Belmont comes into contact with parts of YSU property as well as running near downtown. This area is home to many restaurants and entertainment locations as well as the St. Elizabeth's hospital. There is currently no public art on this corridor so there is plenty of opportunity to showcase art in this part of town.



# Belmont Avenue



# Belmont Avenue



# 420 Martin Luther King Jr | Fire Station



**SURFACE MATERIAL**  
Brick  
**SURFACE CONDITION**  
Good  
**STRUCTURE**  
Occupied

**TRAFFIC VIEW**  
Road Facing Traffic  
**OWNER**  
CITY OF YOUNGSTOWN

# 444 Martin Luther King Jr Blvd | KedPlasma



**SURFACE MATERIAL**  
Metal  
**SURFACE CONDITION**  
Good  
**STRUCTURE**  
Occupied

**TRAFFIC VIEW**  
Road Facing Traffic  
**OWNER**  
ARG PSYNSOH001 LLC



# 110 Fifth | Mahoning County Sherrif's Office



**SURFACE MATERIAL**  
Brick  
**SURFACE CONDITION**  
Good  
**STRUCTURE**  
Occupied

**TRAFFIC VIEW**  
Road Facing Traffic  
**OWNER**  
MAHONING COUNTY

# 221 Belmont | Club Switch



**SURFACE MATERIAL**  
Stucco  
**SURFACE CONDITION**  
Fair  
**STRUCTURE**  
Occupied



**TRAFFIC VIEW**  
Southbound Traffic  
**OWNER**  
WSP INC

# 234 Belmont | Domestic Uniform Rental



**SURFACE MATERIAL**  
Brick, Concrete  
**SURFACE CONDITION**  
Good, Fair  
**STRUCTURE**  
Occupied

**TRAFFIC VIEW**  
Road Facing Traffic  
**OWNER**  
DOMESTIC LINEN SUPPLY CO CRA  
75% 15YR N/C TY03-17

# 381 W Rayen Ave | Frieda's



**SURFACE MATERIAL**  
Brick, Wood  
**SURFACE CONDITION**  
Good  
**STRUCTURE**  
Occupied

**TRAFFIC VIEW**  
Road Facing Traffic  
**OWNER**  
247 BELMONT LLC

# 372 W Rayen | Charlie Staples



**SURFACE MATERIAL**  
Brick  
**SURFACE CONDITION**  
Good  
**STRUCTURE**  
Occupied

**TRAFFIC VIEW**  
Road Facing Traffic  
**OWNER**  
CHARLES H STAPLES &  
MARGARET A STAPLES

# 412 Belmont



**SURFACE MATERIAL**  
Brick, Masonry  
**SURFACE CONDITION**  
Good  
**STRUCTURE**  
Underutilized

**TRAFFIC VIEW**  
Southbound Traffic  
**OWNER**  
STEVE STARYNCHAK



# 551 Ford | YSU Softball Complex



**SURFACE MATERIAL**  
Metal  
**SURFACE CONDITION**  
Good  
**STRUCTURE**  
Occupied

**TRAFFIC VIEW**  
Northbound, Southbound,  
and Road Facing Traffic  
**OWNER**  
STATE OF OHIO

# 542 Belmont | Muhammad Mosque



**SURFACE MATERIAL**  
Concrete  
**SURFACE CONDITION**  
Good  
**STRUCTURE**  
Vacant

**TRAFFIC VIEW**  
Northbound Traffic  
**OWNER**  
MUHUMMAD MOSQUE #9

# 1216 Belmont | Dr. James Graneto, DC



**SURFACE MATERIAL**  
Brick, Masonry  
**SURFACE CONDITION**  
Good  
**STRUCTURE**  
Occupied

**TRAFFIC VIEW**  
Northbound Traffic  
**OWNER**  
JAMES J GRANETO

# 1555 Belmont | Goldie's Flowers Shop



**SURFACE MATERIAL**  
Wood  
**SURFACE CONDITION**  
Fair  
**STRUCTURE**  
Occupied

**TRAFFIC VIEW**  
Northbound Traffic  
**OWNER**  
BEL NOR INC

# 1605 Belmont | Lee's Custom Upholstering



**SURFACE MATERIAL**  
Concrete  
**SURFACE CONDITION**  
Poor  
**STRUCTURE**  
Underutilized

**TRAFFIC VIEW**  
Northbound Traffic  
**OWNER**  
YEVETTE DAVIS

# 1716 Guadalupe | Old North Side Post Office



**SURFACE MATERIAL**  
Brick  
**SURFACE CONDITION**  
Good  
**STRUCTURE**  
Vacant

**TRAFFIC VIEW**  
Northbound Traffic  
**OWNER**  
TALVINDER SINGH



# 1340 Belmont | Mercy Health: Youngstown Neurology



**SURFACE MATERIAL**  
Brick  
**SURFACE CONDITION**  
Good  
**STRUCTURE**  
Occupied

**TRAFFIC VIEW**  
Southbound Traffic  
**OWNER**  
WAYO BOSS LLC

# 555 Catalina | Trade Masters Medical Inc.



**SURFACE MATERIAL**  
Brick, Masonry  
**SURFACE CONDITION**  
Good  
**STRUCTURE**  
Occupied

**TRAFFIC VIEW**  
Northbound Traffic  
**OWNER**  
YOUNGSTOWN VA LLC

## 1908 Belmont



**SURFACE MATERIAL**  
Concrete  
**SURFACE CONDITION**  
Fair  
**STRUCTURE**  
Vacant

**TRAFFIC VIEW**  
Northbound Traffic  
**OWNER**  
JOSEPH D SCHIAVONE & JOHN D  
SCHIAVONE

## 1915 Belmont



**SURFACE MATERIAL**  
Brick  
**SURFACE CONDITION**  
Good  
**STRUCTURE**  
Vacant

**TRAFFIC VIEW**  
Road Facing Traffic  
**OWNER**  
WESTERN RESERVE  
PORT AUTHORITY

# 2031 Belmont | Mercy Health Belmont Medical Center



**SURFACE MATERIAL**  
Brick, Concrete  
**SURFACE CONDITION**  
Good  
**STRUCTURE**  
Occupied

**TRAFFIC VIEW**  
Northbound Traffic  
**OWNER**  
MERCY HEALTH YOUNGSTOWN  
LLC

## 2445 Belmont



**SURFACE MATERIAL**  
Brick  
**SURFACE CONDITION**  
Good  
**STRUCTURE**  
Vacant

**TRAFFIC VIEW**  
Road Facing Traffic  
**OWNER**  
FIREWORKS INDEMNITY  
INSURANCE CO LTD



# Conclusion

We hope after looking through the catalog of opportunity sites you have been inspired to add some public art to any number of these prime locations! Public art is a creative way to invigorate retail spaces and humanize our city's structures.

In addition to the beauty it adds to these corridors it is also freely accessible to all passing by, these locations were specifically chosen with visibility in mind.

We encourage collaboration between artists, businesses, landowners, and community members. All parties should be given ample time to provide input and insight in the public art that will become a part of their community.

EAG would be happy to facilitate outreach on behalf of a potential artist to conduct community engagement in the public art process.

If you, a group, or someone you know would like to peruse the development of a public art piece at any of the locations in this catalog, please feel free to reach out to the EAG team to assist you in any way we can!

# Resources

## National Endowment for the Arts | How to Do Creative Placemaking

[https://www.arts.gov/sites/default/files/How-to-do-Creative-Placemaking\\_Jan2017.pdf](https://www.arts.gov/sites/default/files/How-to-do-Creative-Placemaking_Jan2017.pdf)

PDF of Book | Case Study | Equity Focused

## LISC and National Endowment for the Arts | How to Do Creative Placemaking - Technical Assistance

<https://www.lisc.org/our-initiatives/creative-placemaking/main/Training-Program-for-Grantees>

Equity Focused

## LISC and National Endowment for the Arts | How to Do Creative Placemaking - Toolkit

<https://www.lisc.org/our-initiatives/creative-placemaking/main/creative-placemaking-toolkit/>

Toolkits | Training | Equity Focused

## National Endowment for the Arts | Our Town Grant

<https://www.arts.gov/grants/our-town>

Funding Opportunity

## Citizens' Institute on Rural Design (CIRD) | Rural Design Webinars

<https://www.rural-design.org/webinars>

Webinars | Toolkits

# Resources

## National Endowment for the Arts | List of Our Town's Past Programs

<https://www.arts.gov/sites/default/files/Our-Town-Knowledge-Building-Awards-through-2019.pdf>

List of Programs 2015-2019

## Americans for the Arts | Toolkits

<https://www.americansforthearts.org/by-program/reports-and-data/toolkits>

5 Toolkits

## Americans for the Arts | Public Art 101

<https://www.americansforthearts.org/by-topic/public-art>

Case Study | Toolkits

## The PARTnership movement | Toolkits

<https://www.partnershipmovement.org/tools-resources/toolkits>

Toolkits

## National Assembly of State Arts Agencies | Creative Placemaking Public Resources Guide

<https://creativeplacemakingresources.org/>

Funding Opportunity | Case Studies

## MONOCHRONICLE | Proposed Best Practices for Public Art Projects

<https://monochronicle.com/best-practices-for-public-art-projects/>

Guidelines



# Resources

**National Civic League | Public Art and the Art of Public Participation**

<https://www.nationalcivicleague.org/ncr-article/public-art-and-the-art-of-public-participation/>

Equity Focused | Community Focused

**Americans for the Arts | Five Lessons Learned for a Successful Public Art Project**

<https://cdn.atlantaregional.org/wp-content/uploads/08-how-to-do-creative-placemaking-lessonspublicartproject.pdf>

Equity Focused | Community Focused

**Louisville, KY | City Page**

<https://louisvilleky.gov/government/arts-culture/explore-public-art>  
Case Study

**Louisville, KY | Case Study Planning**

<https://louisvilleky.gov/arts-culture/document/loumomentmaker-public-space-activation-gude>

PDF of Book

**Center for Neighborhoods | Producing Art In Neighborhoods Together (PAINT)**

<https://centerforneighborhoods.org/paint/>

Equity Focused | Community Focused

# Resources

## Examples of Public Art

### Traffic Box Art

<https://stowohio.org/280/Traffic-Box-Art>

<https://www.clintonvilleareacommission.org/trafficboxart/>

### Statue Art

<https://www.artsinohio.com/public-art/8486-inner-circles>

<https://www.artsinohio.com/public-art/8161-alley-entrances>

<https://omfa.us/river-artes/>

### Yarn Bombing

<https://feltmagnet.com/textiles-sewing/What-is-Yarn-Bombing>

### Chalk

<https://zestevents.com.au/services/3d-chalk-art-3d-street-painting/>